

**SPACE**

# SPACE MATTERS

Website - [www.spacematters.in](http://www.spacematters.in)

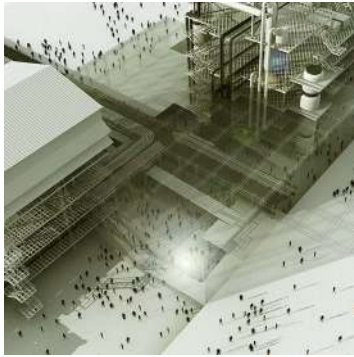
Address-C- 9, 9812, Vasant Kunj, New Delhi, Delhi 110070

Contact- 011 4603 5647

<https://www.facebook.com/spacematters.in/>

[https://www.instagram.com/spacematters\\_studio/?hl=en](https://www.instagram.com/spacematters_studio/?hl=en)

## ABOUT US



SpaceMatters is an integrated design practise with architecture, interior, urban design and habitat research capabilities based out of New Delhi. Founded in 2005 by architects Amritha Ballal, Moulshri Joshi and Suditya Sinha, the award winning practice has been consistently recognised as one of the leading design firms in India.

Our projects span a variety of scales and contexts ranging from public institutional projects such as the Bhopal Gas Tragedy Memorial and revitalization for the post-disaster industrial complex in Bhopal to urban planning projects including one of the first Integrated Development Plans (IDP) for urban villages in Dwarka, New Delhi to designing commercial and residential spaces for leading corporates such as Titan, DLF Retail and Jindal Steel Works.

Habitat Research, an interdisciplinary study of environmental, socio-economic, technical and cultural dimensions of the built environment is an integral aspect of SpaceMatters practice and advocacy. SpaceMatters has established research collaborations with NTNU, Norway, Council of Scientific and Industrial Research - National Environmental Engineering Research Institute (CSIR-NEERI) amongst others.

At SpaceMatters the design process is challenging and rewarding and the pleasure we derive from it finds evidence in our work.



## VISION

Design is an indispensable strategy to add tangible value through utility and beauty.

We create spaces that contribute positively to the environmental, cultural and economic context in which they are rooted. Based on collaborative, research based interventions; these spaces are designed to inspire, include, and evolve with time. Our work thrives in the interactions of the global-local zeitgeist, intersecting architecture, urbanism, landscape, art and technology across scales and contexts.

## SERVICES

//Architecture // Interior Design// Urban Design  
and Planning // Heritage Management  
// Experience Design // Habitat Research  
//Social Design

## CORE SEGMENTS

// Restorative Design  
// Ecological Planning  
// Modern Heritage  
// Industrial Heritage  
// Mobility and Transport Infrastructure  
// Youth and Sports Infrastructure  
// Education  
// Affordable Housing



# TEAM

SpaceMatters is a team of 25 architects, engineers designers, visualizers and project managers working across sectors throughout the country.

The team is led by the founding partners—Amritha, Suditya and Moulshri.

## PARTNERS



**Amritha Ballal** is an architect and urban planner, and a founding partner at Space Matters. She teaches at the School of Planning and Architecture, Delhi and is the co-editor of the international publication 'Bhopal 2011-Landscapes of Memory' which explores themes of spatial memory through the case of the Union Carbide tragedy site in Bhopal. Amritha has been nominated for the Rolex Arts Foundation Mentor Protégé Initiative in 2014 and named in the annual international shortlist of emerging woman architects Architecture Journal, UK in 2013.

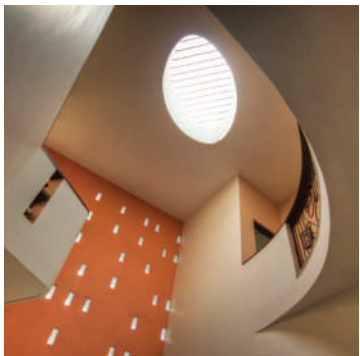


**Moulshri Joshi** is trained as an architect and is a founding partner at Space Matters. She represents TICCIIH: The International Committee for Conservation of Industrial Heritage in India and is a core member of mAAN: modern Asian Architecture Network. Since 2005, she has been involved in the remediation and revitalization of the site of the Bhopal Gas Tragedy. She has lectured extensively on the potential and problematic notion of industrial heritage in India. Her current work 'The Tenth Delhi' looks at contemporary urban development in Delhi and the complex lexicon of typologies within which the city operates.



**Suditya Sinha** is an architect and is a founding partner at SpaceMatters. He is the design and management core of the team where his competence with the actual business of crafting built form and producing tangible and realistic solutions are key assets. Suditya has led delivery of complex, award winning projects with his technological, construction, legal and financial acumen. Suditya has served on the management of various companies while being continuously engaged with young architects and design start-ups as a mentor and educator. Suditya's passion for design is inspired from his early experiences of being close to nature and keen observation of plant and animal life. He brings in deep ecological sensitivity to civic projects as well as nature-inspired geometries to architectural forms.

## CLIENTS



Our clients include leading private and public sector enterprises, retail chains, hospitality companies, educational institutions, IT companies and real-estate developers.



# AWARDS

QUALITY AWARDS  
COMPETITIONS

## 2019

//THE MERIT LIST  
//ARCHMARATHON SELECTION AWARD -ART AND CULTURE CATEGORY  
//RETHINKING THE FUTURE:GLOBAL ARCHITECTURE & DESIGN AWARDS-POP UP AND TEMPORARY STRUCTURES CATEGORY  
//ALL INDIA STONE ARCHITECTURAL AWARD- EXTERIOR FACINGS CATEGORY  
//INSTITUTE OF INDIAN INTERIOR DESIGNERS' DESIGN EXCELLENCE NATIONAL AWARDS-RETAIL CATEGORY  
//ARCHITIZER A+ AWARDS -ARCHITECTURE AND STONE CATEGORY  
//BAHA'I HOUSE OF WORSHIP IN BIHAR SHARIF

## 2018

//POOL MAGAZINE—INDIA'S BEST COMMUNICATION DESIGN PROJECT  
//MUSI RIVERFRONT REVITALIZATION COMPETITION

## 2017

//27TH JK ARCHITECT OF YEAR AWARD—RELIGIOUS ARCHITECTURE CATEGORY  
//WADE ASIA EXCELLENCE AWARDS—PUBLIC BUILDING CATEGORY  
//PWD, SCHOOL DELHI GOVERNMENT

## 2016

//DELHI ARCHITECTURE FESTIVAL AWARDS— INSTITUTIONAL BUILDING CATEGORY  
//THE INDIAN INSTITUTE OF ARCHITECTS AWARDS— INSTITUTIONAL PROJECT CATEGORY  
//NDTV DESIGN AND ARCHITECTURE AWARDS— FINALIST FOR INSTITUTIONAL CATEGORY  
//INSTITUT FRANÇAIS INDIA, FRENCH EMBASSY

## 2015

// ALL INDIA STONE ARCHITECTURAL AWARD— INSTITUTIONAL CATEGORY

## 2014

//ARCHI DESIGN AWARDS—AWARD FOR BEST WRITTEN AND DOCUMENTED WORK ON ENVIRONMENT  
//ROLEX ARTS FOUNDATION—MENTOR PROTEGE INITIATIVE

## 2013

//ARCHITECTS JOURNAL: WOMEN IN ARCHITECTURE AWARDS-EMERGING ARCHITECTS LIST  
//RESIDENTIAL SCHOOL, ATCHIKADU  
//NALANDA UNIVERSITY, BIHAR

## 2012

//INDIAN ARCHITECT AND BUILDER—YOUNG ARCHITECTS AWARDS  
//PATNA MUSEUM, PATNA

## 2010

//DESIGN TODAY—EMERGING ARCHITECTS SPECIAL ISSUE  
//CIDCO SCIENCE CITY, NAVI MUMBAI

## 2009

//ARCHI DESIGN AWARDS—BEST INTERIOR DESIGN AWARD  
//WAR MEMORIAL, BHOPAL

## 2008

//MRIGNAYANI STATE EMPORIUM FLAGSHIP SHOWROOM  
//TERI UNIVERSITY, DELHI

## 2005

//THE BHOPAL GAS TRAGEDY MEMORIAL COMPETITION  
//VAN BHAWAN, BHOPAL

# MEDIA

PRESS  
PUBLICATIONS

Our projects have received numerous awards across the years including Architizer A+ awards and have been featured in publications and academic journals internationally. As a research based practice, we engage with subjects ranging from public history and memory, critical heritage and architectural practice by contributing to international journals and lecturing on public areas.



## ONGOING SM@10

//LANDSCAPE ARCHITECTURE JOURNAL - LA JOURNAL  
//LIKHAI - THE WOODCARVING ART OF KUMAON

## 2019

//INDIAN EXPRESS  
//MID DAY  
//HINDUSTAN TIMES  
//WHAT IS PUBLIC HISTORY GLOBALLY  
//INTERIORS AND DECOR MAGAZINE

## 2018

//IFJ MAGAZINE  
//ARCHITECTURE LIVE

## 2017

//ARCHITECTURE+DESIGN MAGAZINE  
//INDUSTRIAL HERITAGE OF INDIA  
//KUMAON BUILD, THE CRAFT OF LIKHAI  
//INSITE  
//INSIDE OUTSIDE MAGAZINE

## 2015

//DESIGN DETAIL  
//DOMUS

## 2016

//LITTLE BLACK BOOK

## 2013

//ARCHITECTURE JOURNAL, UNITED KINGDOM  
//EUROPA CONCORSI, ITALY  
//ARCHITECTURE UPDATE  
//LANDSCAPES OF MEMORY

## 2012

//INDIAN ARCHITECT AND BUILDER  
//TICCIH BULLETIN  
//LESS THAN HOMELESS

## 2011

//TICCIH BULLETIN

## 2009

//DESIGN TODAY

## 2008

//CONTEMPORARY INDIAN ARCHITECTURE

## 2007

//ARCHIWORLD INTERNATIONAL COMPETITION ANNUAL, SEOUL

## 2006

//JOURNAL OF LANDSCAPE ARCHITECTURE, NEW DELHI  
//ARCHIDESIGN INDIA FEB  
//MODERN ASIAN ARCHITECTURE NETWORK JOURNAL, TOKYO  
//BUILDING REVIEW, SHANGHAI  
//TICCIH BULLETIN  
//ANSA, ITALY  
//OUTLOOK INDIA

## 2005

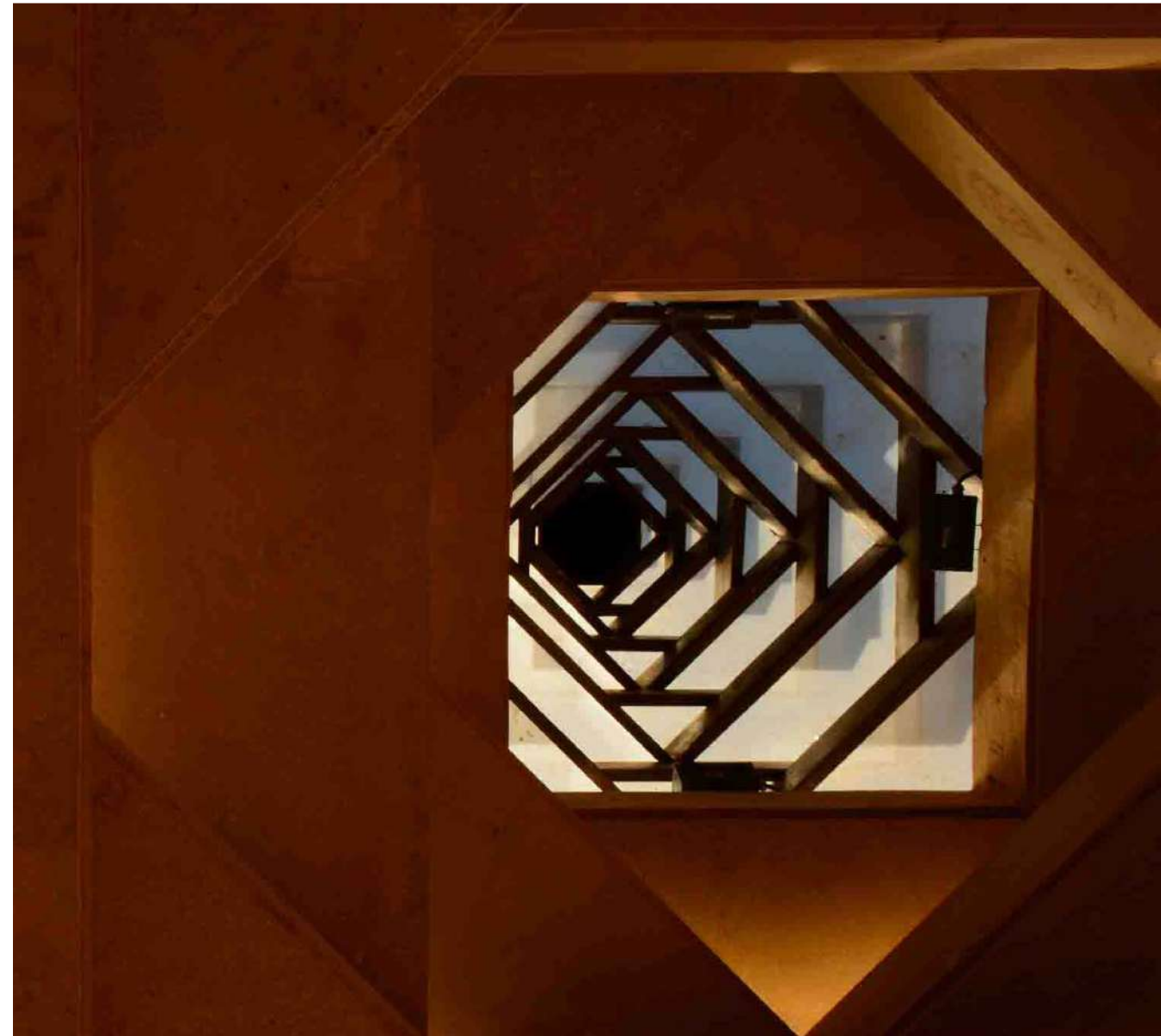
//INDIAN ARCHITECT + BUILDER  
//A+D OCT  
//HINDUSTAN TIMES  
//INDIAN EXPRESS  
//TIMES OF INDIA

# EXHIBITIONS

Indian and international institutions and exhibitions have hosted our work. Built, unbuilt and research work by SpaceMatters have been exhibited at the National Gallery of Modern Art (2013), Delhi Architecture festival (2017), FAAA Dialogues (2018), Archmarathon Made expo (2019) etc.



- 2019**  
//ARCHMARATHON MADE EXPO, MILAN  
CDOS EVENT, JAIPUR  
SIX EXHIBITION,GUWAHATI
- 2018**  
// FAAA DIALOGUES, NEW DELHI  
// ARCHITECTURE FOR MASSES SEMINAR, NEW DELHI
- 2017**  
//DELHI ARCHITECTURE FESTIVAL, NEW DELHI  
//BONJOUR INDIA, THE EXPERIENCE (A JOURNEY WITH FRANCE)  
//GREENBUILD INDIA, BANGALORE  
//ICOMOS GENERAL ASSEMBLY, NEW DELHI  
FESTIVAL OF ARCHITECTURE AND INTERIOR DESIGNING (FOAID), MUMBAI
- 2016**  
//THE STATE OF ARCHITECTURE, NGMA MUMBAI
- 2013**  
//NATIONAL GALLERY OF MODERN ART, DELHI  
INDIA ART FAIR INSTALLATION, NEW DELHI
- 2012**  
//URBAN INDIA, NTNU, NORWAY
- 2011**  
//35 UNDER 35 EXHIBITION, ALLAINCE FRANCAISE, DELHI  
//INDIRA GANDHI RASHTRIYA MANAV SANGRAHALAYA, BHOPAL  
//CHINA ACADEMY OF ART, HANGZHOU  
//URBAN INDIA CONFERENCE NTNU,NORWAY
- 2009**  
//XIV INTERNATIONAL TICCIH CONGRESS AT FREIBERG, GERMANY  
//SYMPOSIUM ON WORLD HERITAGE NOMINATION OF INDUSTRIAL SITES, NAGASAKI  
//MAAN INTERNATIONAL CEMENT FACTORY REVITALIZATION WORKSHOP, PADANG, INDONESIA

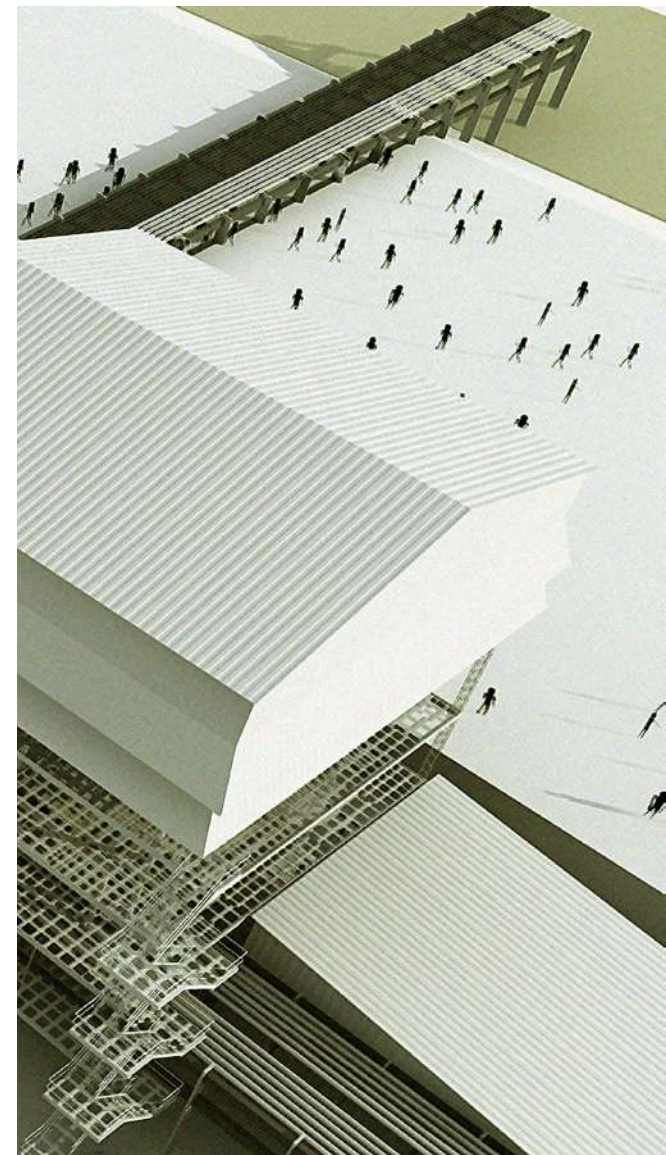
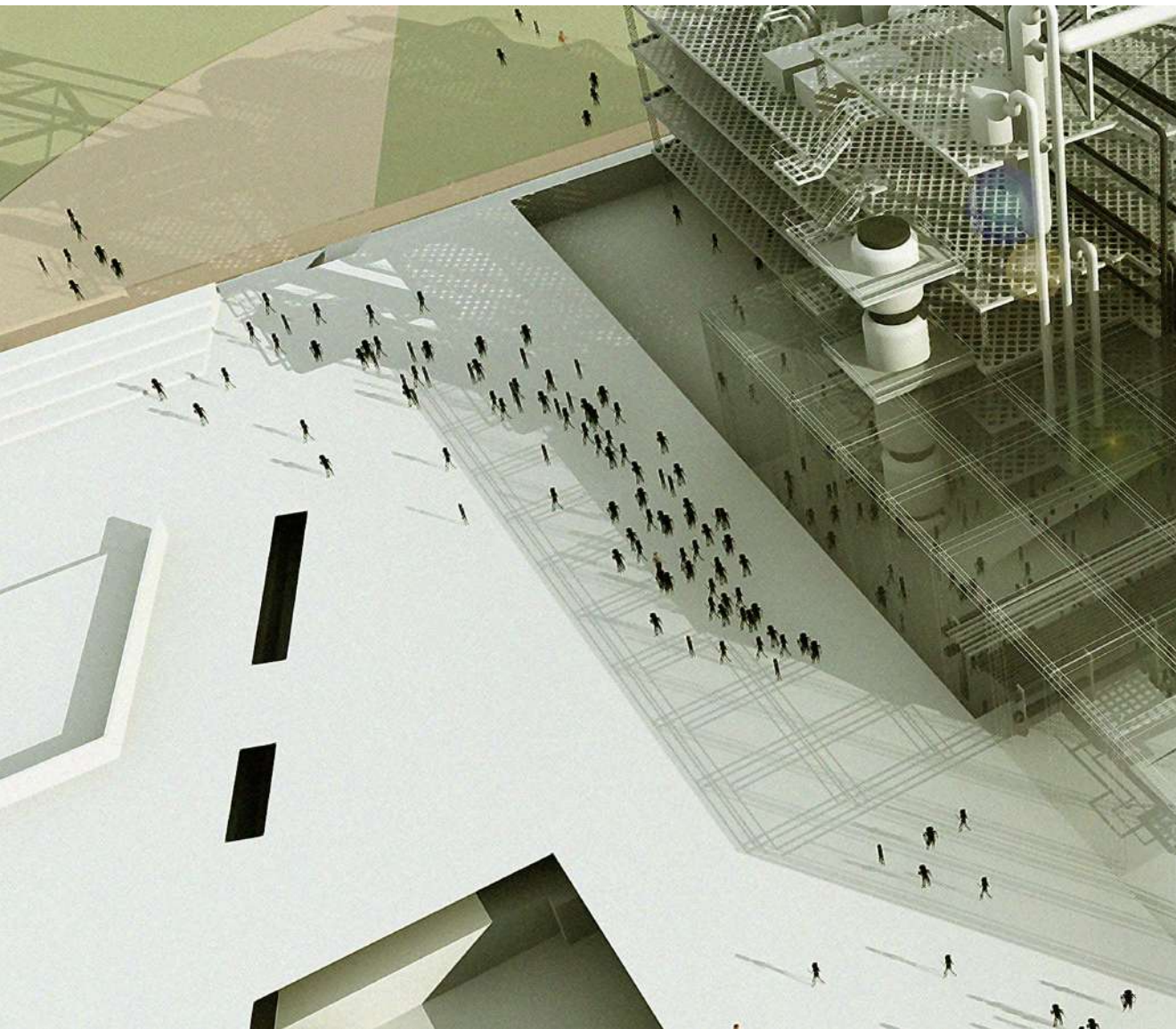


## HABITAT RESEARCH

Habitat Research forms an essential pillar of our practice. We do not view research as auxiliary to architecture, rather a generator and basis for good design. We regularly initiate documentation projects which go above and beyond traditional confines of a design practice. The subjects we have covered so far include- post industrial landscapes: intersecting remediation & conservation concerns, modern and industrial heritage in India, stone craft in Rajasthan, ecological restoration including native forestry, wood craft of Kumaon hills, urban homelessness, urban informality, public history, memory and the Bhopal gas tragedy.

## RESEARCH

- // Industrial Heritage
- // Brownfield Restoration
- // Ecological Design
- // Architectural Education
- // Homelessness
- // Urban Informality
- // Built Craft Revival





**Ashoka University**  
2016

A monumental jaali welcomes people into Ashoka University - a compact, high-density campus with abundant public spaces that are conducive to learning and enquiry.

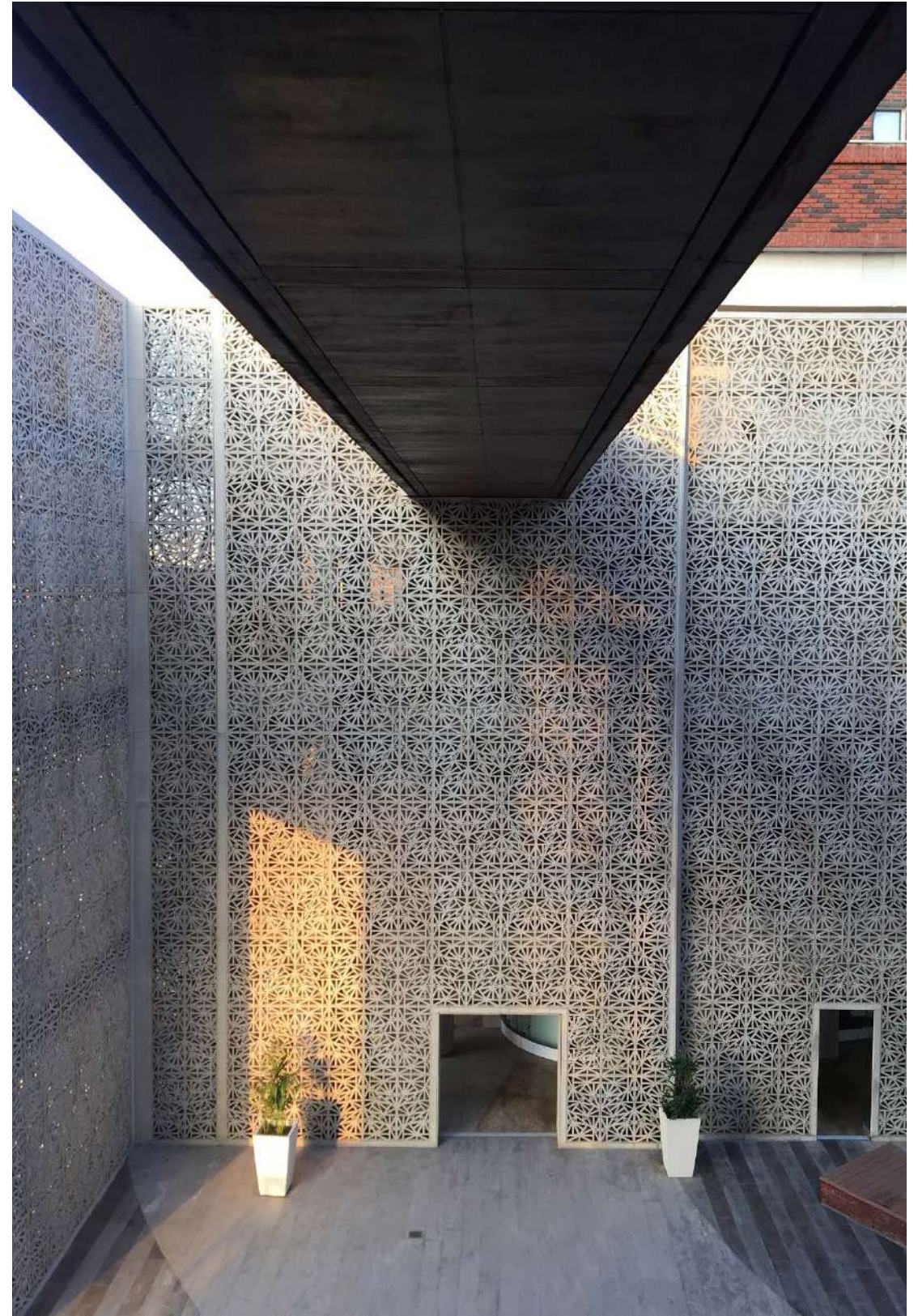
10,00,000 sqft

Sonepat, Haryana  
International Foundation For Research And Education

Educational



Ashoka University  
2016





Ashoka University  
2016





**Bonjour India Experience**  
2017

The pavilion was a one-of-its-kind traveling exhibition combining art, architecture, experience design and urbanism.

8000 sqft

New Delhi, Mumbai, Kolkata  
French Cultural Institute

Cultural  
Public Infrastructure  
Urbanism



Bonjour India Experience  
2017





Bonjour India Experience  
2017



Bonjour India Experience

2017



**Shiv Nadar Cultural Centre  
and Kiran Nadar Museum  
of Arts**

2019

32

The building is designed as much as a container for art, as a work of art in itself. Through its dramatic expression, the proposal unabashedly embodies the institutional vision of the client to "establish a first of its kind cultural and creative powerhouse in India".

2,00,000 sqft

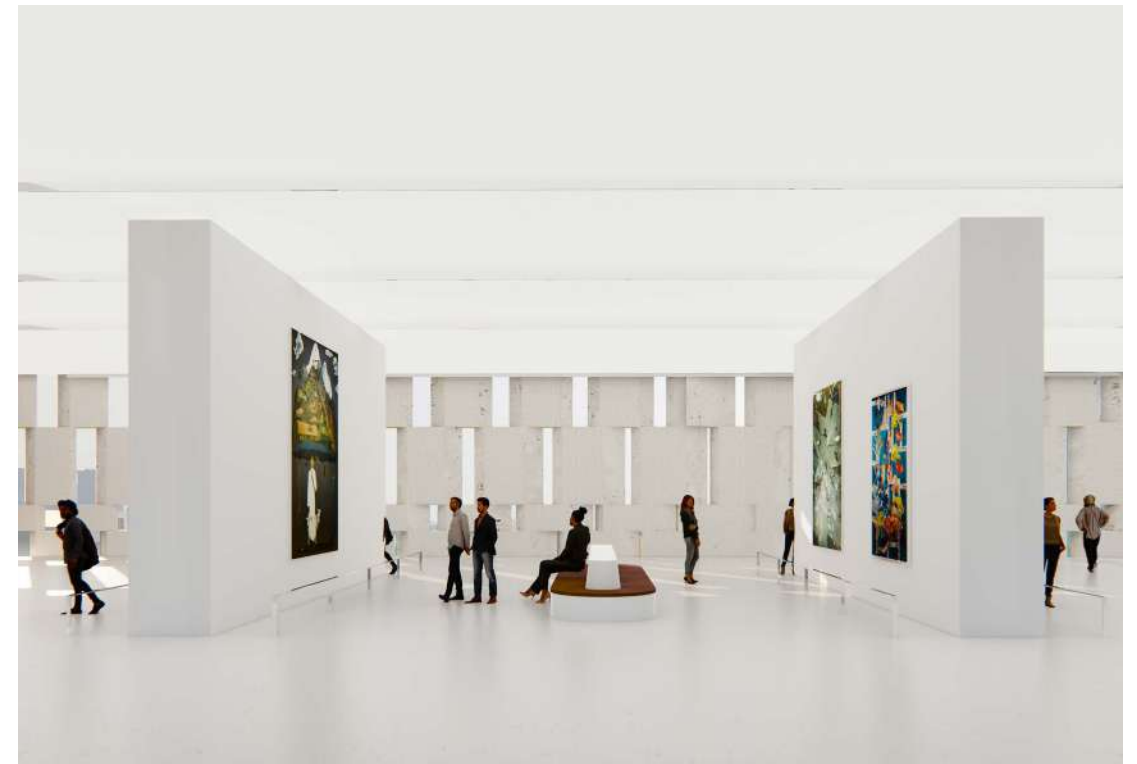


Noida  
HCL Technologies

Competition Entry with Snohetta  
Cultural



Shiv Nadar Cultural Centre  
and Kiran Nadar Museum  
of Arts  
2019  
34





**ARDEE School**  
2017

An International school with montessori style junior wing and a green facade.

66,000 sqft

NFC New Delhi  
ARDEE

Cultural  
Educational



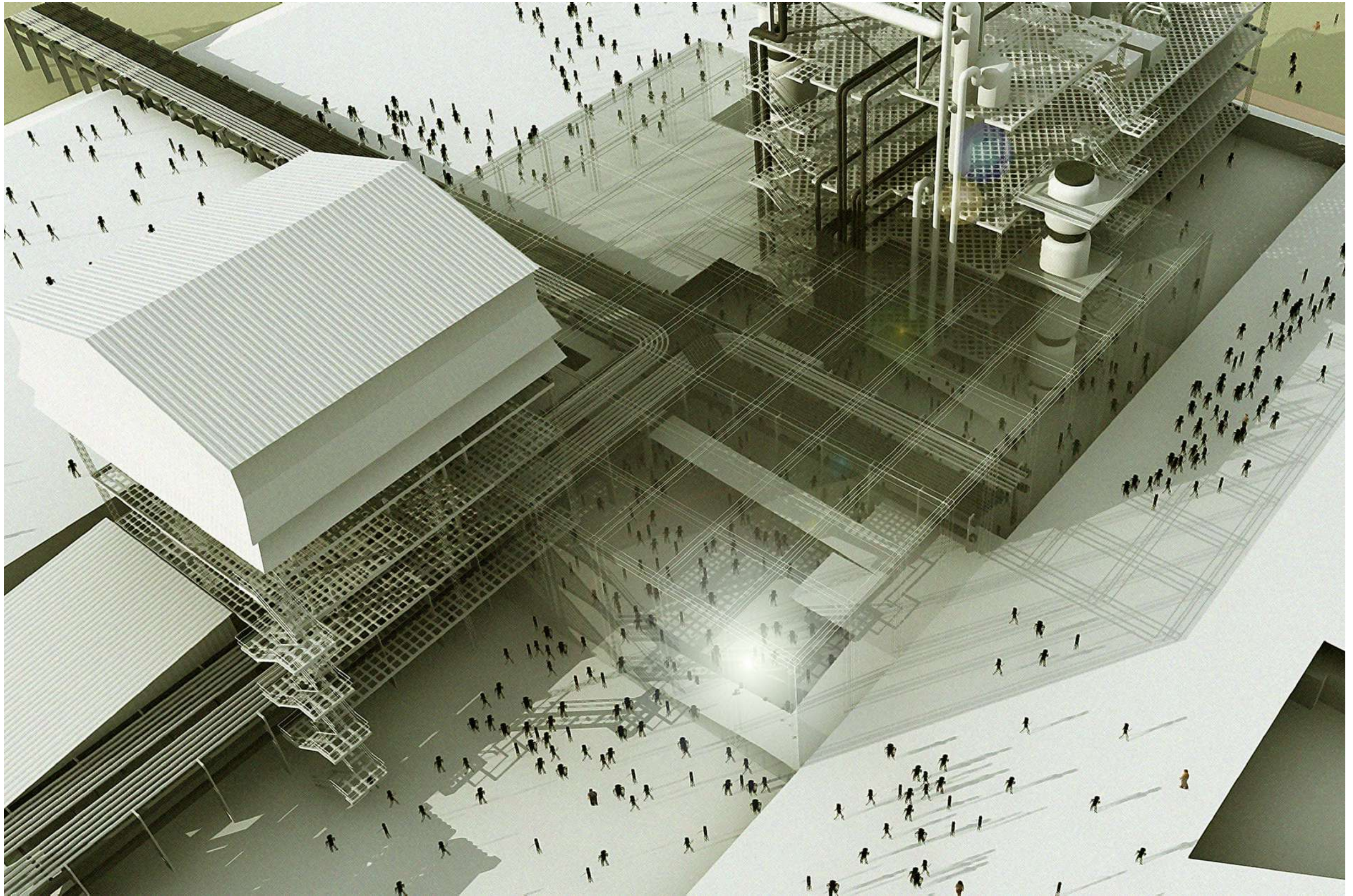
ARDEE School  
2017





ARDEE School  
2017





**Bhopal Gas Tragedy  
Memorial**  
2005-Ongoing

The inherent complexity of the site of 'memorialization' was tackled through a three pronged engagement that addresses the past, the present and the future.

33,54,120 sqft

Bhopal, Madhya Pradesh  
Govt. of Madhya Pradesh

Cultural  
Educational  
Urbanism  
Public Infrastructure



**Bhopal Gas Tragedy  
Memorial**  
2005-Ongoing



*“We believe that it is critically important to preserve and communicate the memory of the Union Carbide disaster in Bhopal for realizing the possibility of a world free of disasters such as Bhopal. We believe that the structures of the MIC and Sevin plants and few remaining structures are; in the likeness of the remains of the concentration camps at Auschwitz and Buchenwald and other places, of tremendous educational value for future generations across the world and therefore must be preserved.”*

*Excerpt from a letter addressed to UNESCO from survivors of the Bhopal Gas Tragedy seeking formal recognition of the heritage value of Union Carbide plant in Bhopal, New Delhi, 2009.*

The city of Bhopal in India was the site of the Gas Tragedy of 1984, considered one of the world's worst industrial disasters. The abandoned site of the tragedy, the Union Carbide Factory in Bhopal is a repository of history and stories that need to be told. Its relevance concerns questions of power, justice and sustainability - social and ecological. The Bhopal2011 workshop and symposium, raised and addressed these questions. It focused on the possible transformation of the site into a place of remembrance and a resource for the local community and city. 'Landscapes of Memory' is a presentation of the process, participants, insights and outcomes of Bhopal2011.

A mAAN, SpaceMatters, NINU and University of Gothenburg publication ISBN: 978-82-725-9121-1

BHOPAL 2011  
landscapes of memory

BHOPAL 2011  
landscapes of memory



**Bhopal War Memorial**  
2008

The design approach focused on integrating landscape and architecture of the site as a symbolic gesture rather than focusing on a single object as a memorial.

6,53,400 sqft

Bhopal, Madhya Pradesh  
Govt. of Madhya Pradesh

Cultural  
Public infrastructure



Bhopal War Memorial  
2008





**Institut français India**  
2017

The French cultural centre's Lutyen-bungalow office is restored and renovated into a contemporary style workplace with a french undertone.

11,000 sqft

New Delhi  
French Cultural Institute

Cultural  
Public Infrastructure

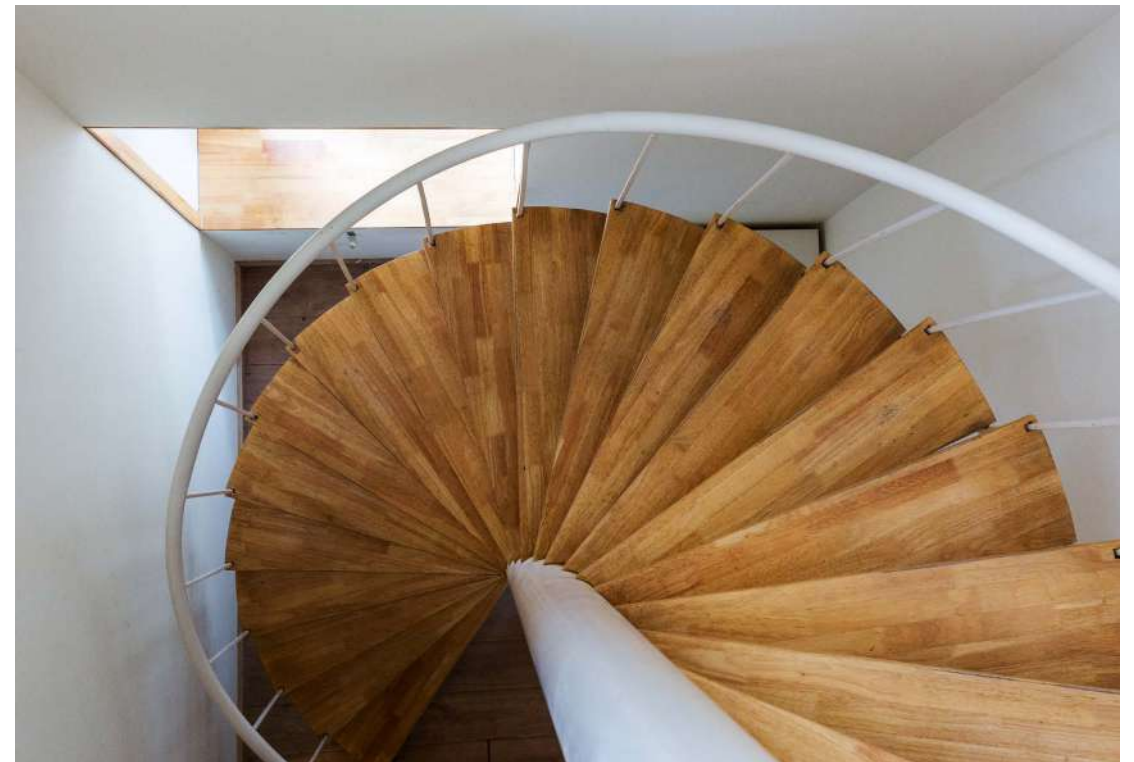


Institut français India  
2017





Institut français India  
2017





**Sri Aurobindo Centre for Arts and Communication**  
2015

A project seeking to create a hub for learning and culture on a site reknown for its location, greenery, and the energy it exudes. It is well positioned to nurture the many activities that the society conducted and supported.

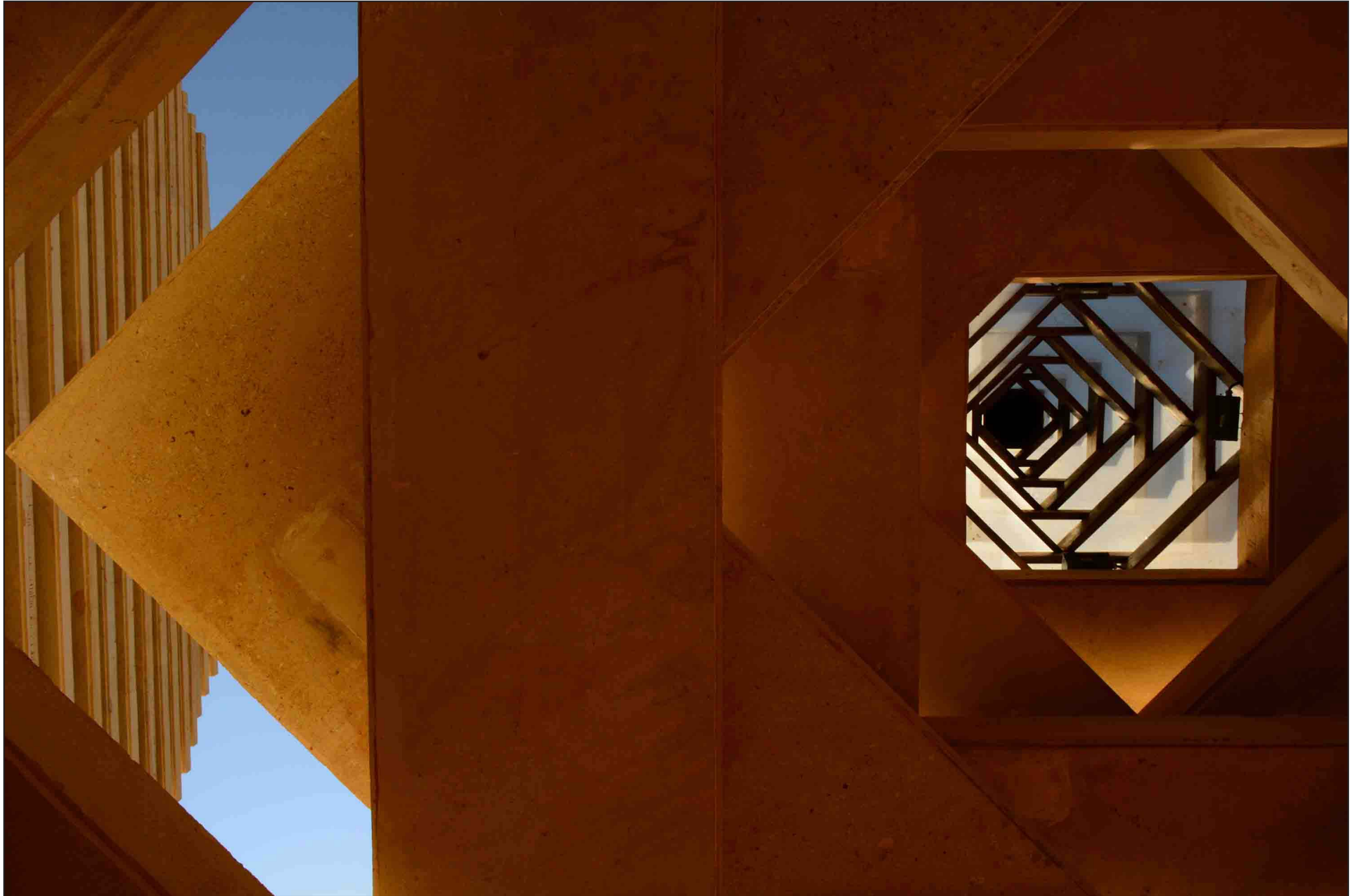
86,100 sqft

New Delhi  
Sri Aurobindo Society

Cultural  
Educational



Sri Aurobindo Centre for  
Arts and Communication  
2015



**Temple of Stone and Light**  
2016

Set against prominent industrial structures, the temple was an opportunity to design a contemporary interpretation of the traditional temples of the region.

1500 sqft

Barmer, Rajasthan  
Raj West Power Limited

Cultural  
Educational



**Temple of Stone and Light**

2016



**Temple of Stone and Light**

2016





**INHWA Office**  
2012

The INHWA business center located in Gurugram provides a wide range of high quality, fully furnished and flexible office spaces to meet all kinds of organizational needs.

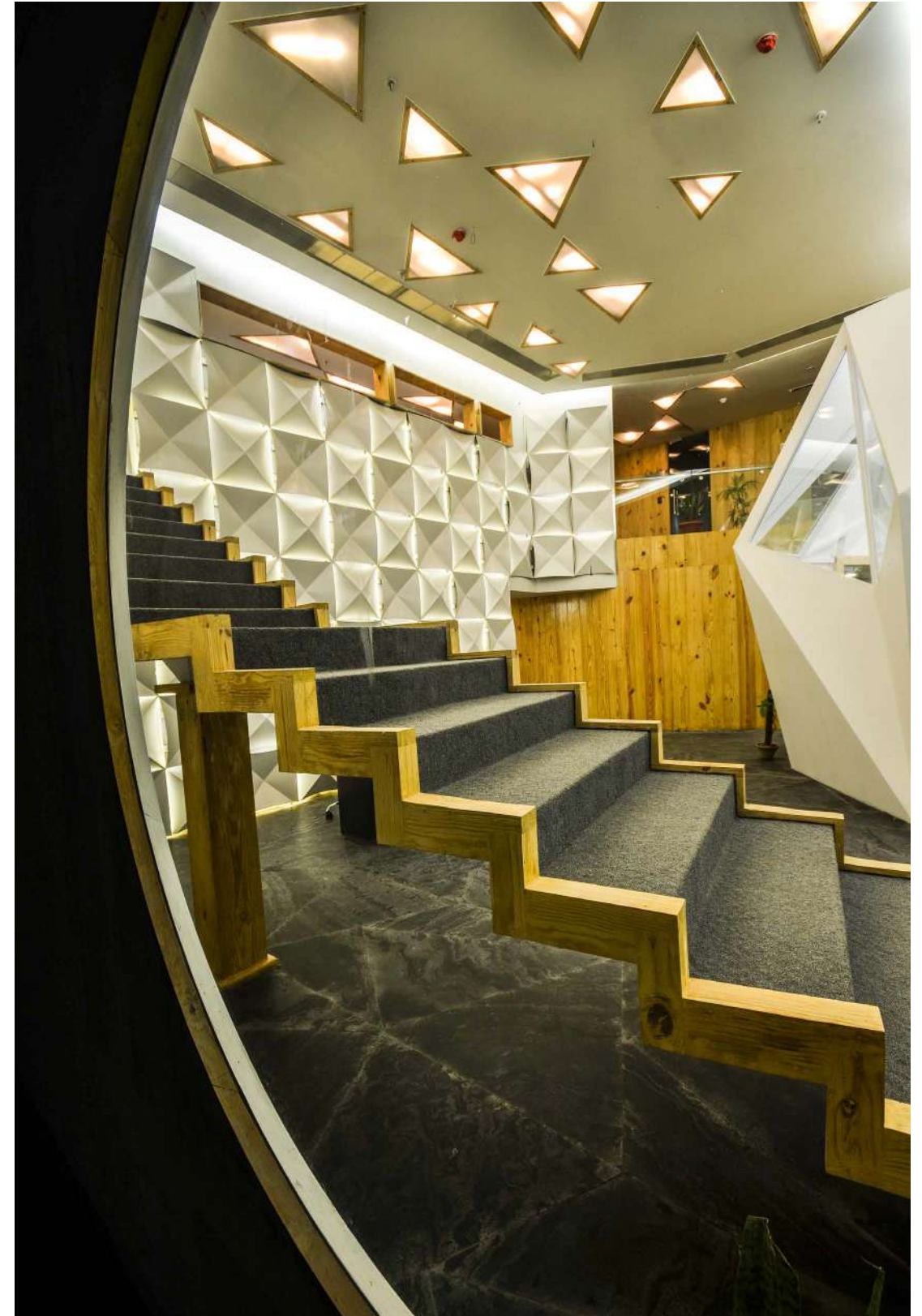
10,000 sqft

Gurugram, Haryana  
INHWA

Commercial



INHWA Office  
2012





INHWA Office  
2012



**Local Bus Terminals**  
Ongoing

Reimagining bus transport hubs as people-centric public spaces.

87,120 sqft

New Delhi  
Govt. of NCT of Delhi

Public Infrastructure



**Local Bus Terminals**  
Ongoing





**Paramedical College**  
2019

A modern structure rooted in its grand past; the resultant building is iconic in its scale and elevational features.

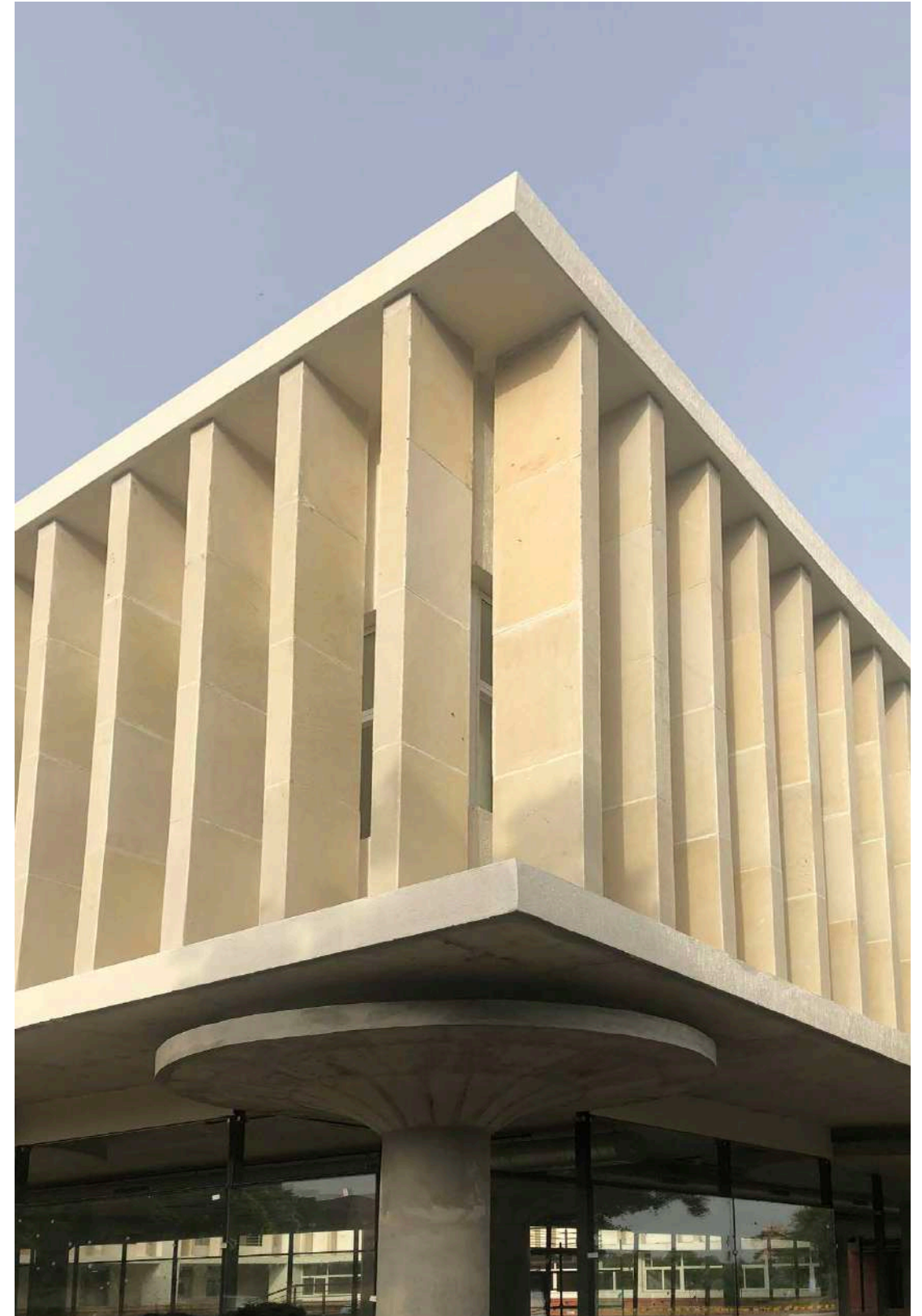
89,000 sqft

Agroha, Haryana  
JSW, JSPL, MAMC

Educational



Paramedical College  
2019





**GBP Aerosi**  
Ongoing

30 acres of mixed land use development

10,00,000 sqft

Banur, Punjab  
GBP

Residential  
Commercial



**GBP Aerosi**  
Ongoing





**GBP Centrum-1**  
Ongoing

A mixed use, G+ 18 floors upcoming 4 star hotel

8,00,000 sqft

Zirakpur, Punjab  
GBP

Hospitality  
Public Infrastructure



**GBP Centrum-1**  
Ongoing





**GBP City Centre Housing and Commercial**  
Ongoing

Designed with a classical influence, the project aims at segregating pedestrian and vehicular movement along with various green features.

30,00,000 sqft



Banur, Punjab  
GBP

Residential  
Commercial



**Seclude Ramgarh**  
2006

The project provided an opportunity to reinterpret prototypes for building in hills creating a footprint least obtrusive responsive to the surroundings.

10,500 sqft



Ramgarh, Uttarakhand  
Seclude

Hospitality



**Seclude Ramgarh**  
2006





**Red Cedar Cottage**  
2016

The design of the cottage is made sustainable by integrating the structure into the already existing landscape, and using locally available resources to minimize its impact on the surrounding environment. It is a part of the Seclude Palampur boutique resort.

215 sqft

Palampur, Himachal Pradesh  
Seclude

Hospitality



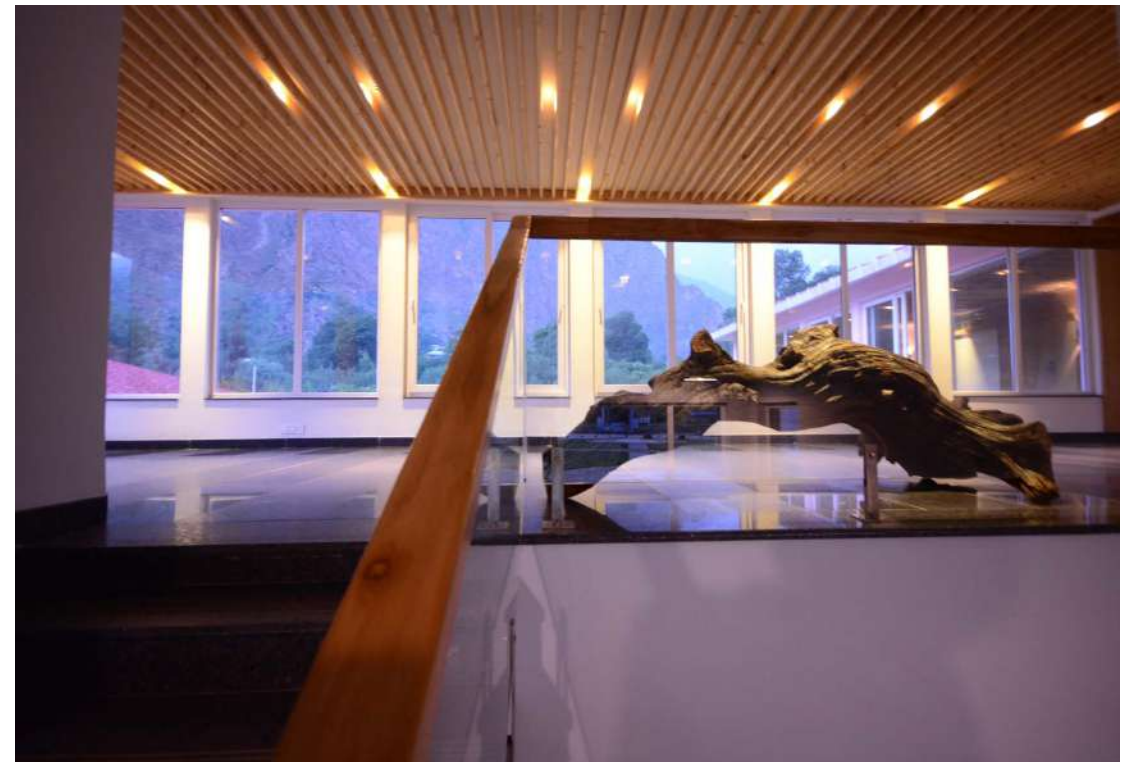
**Red Cedar Cottage**  
2016



**Baspa Bhawan**  
2017

The retreat is designed to bring the views of the Himalayan valley deep into the interior spaces. The materials showcase a natural palette including sculptural driftwood recovered from the site.

14,000 sqft



Himachal Pradesh  
JSW

Hospitality



**Baspa Bhawan**  
2017





**Kilba Staff Housing**  
Ongoing

The project provides housing to 230 labour working in harsh climate, high altitude and a remote industrial site.

46,500 sqft

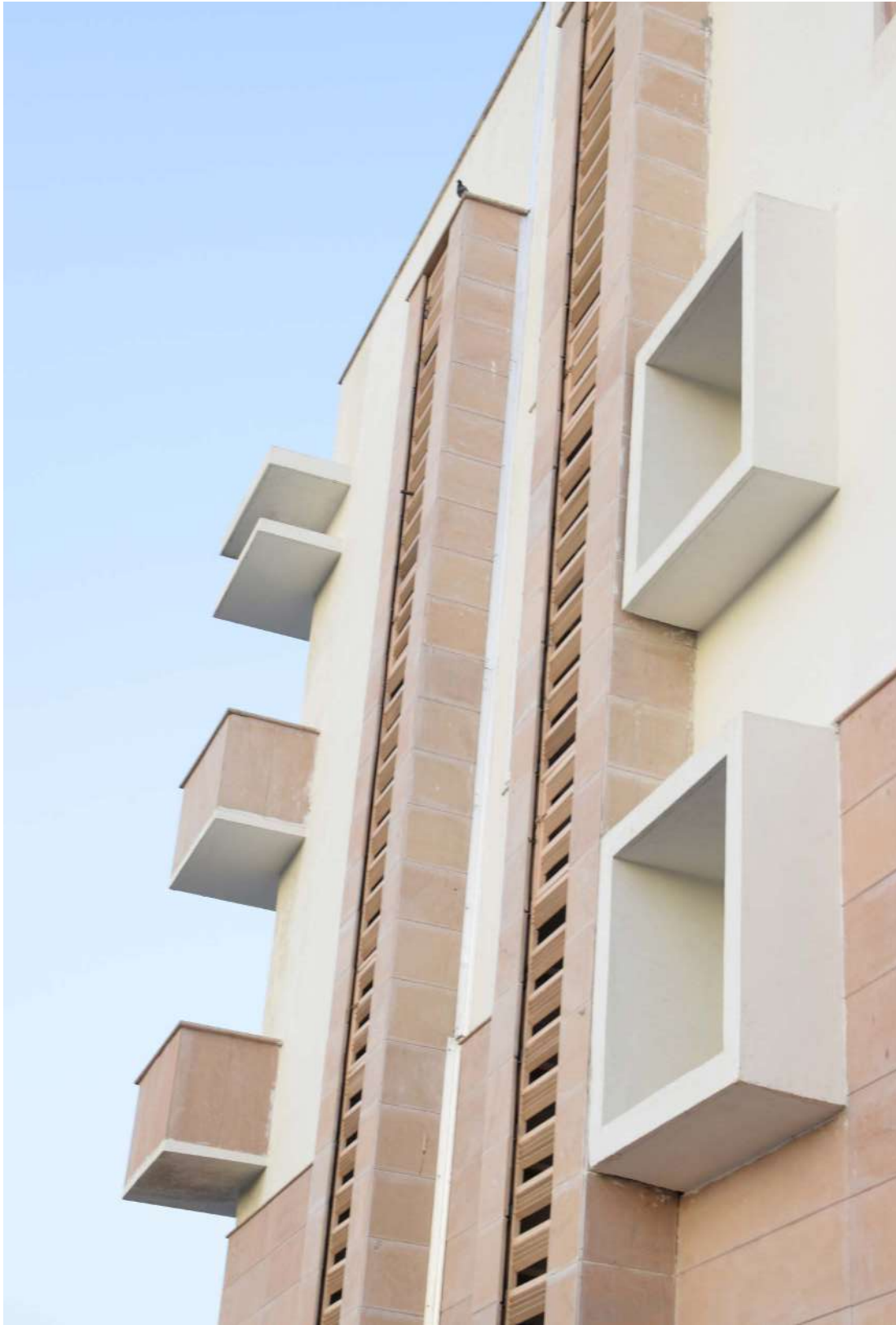
Kilba, Himachal Pradesh  
JSW

Residential



**Kilba Staff Housing**  
Ongoing

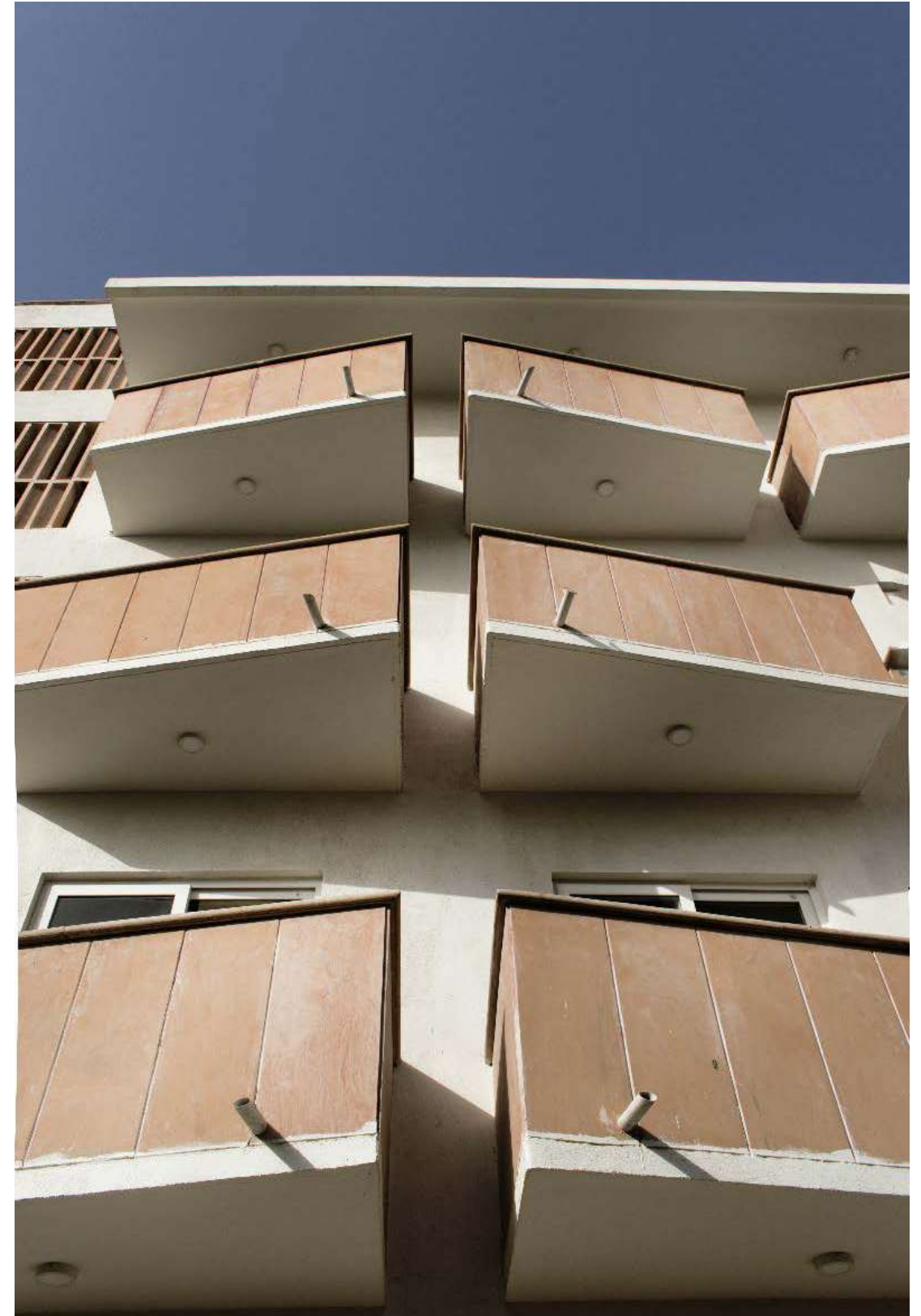




**Barmer Hostel**  
2017

An addition to an existing campus using locally available materials to create innovative details. Local stone has been used on windows instead of glass to create heat-cutting, light-infusing screens.

36,400 sqft

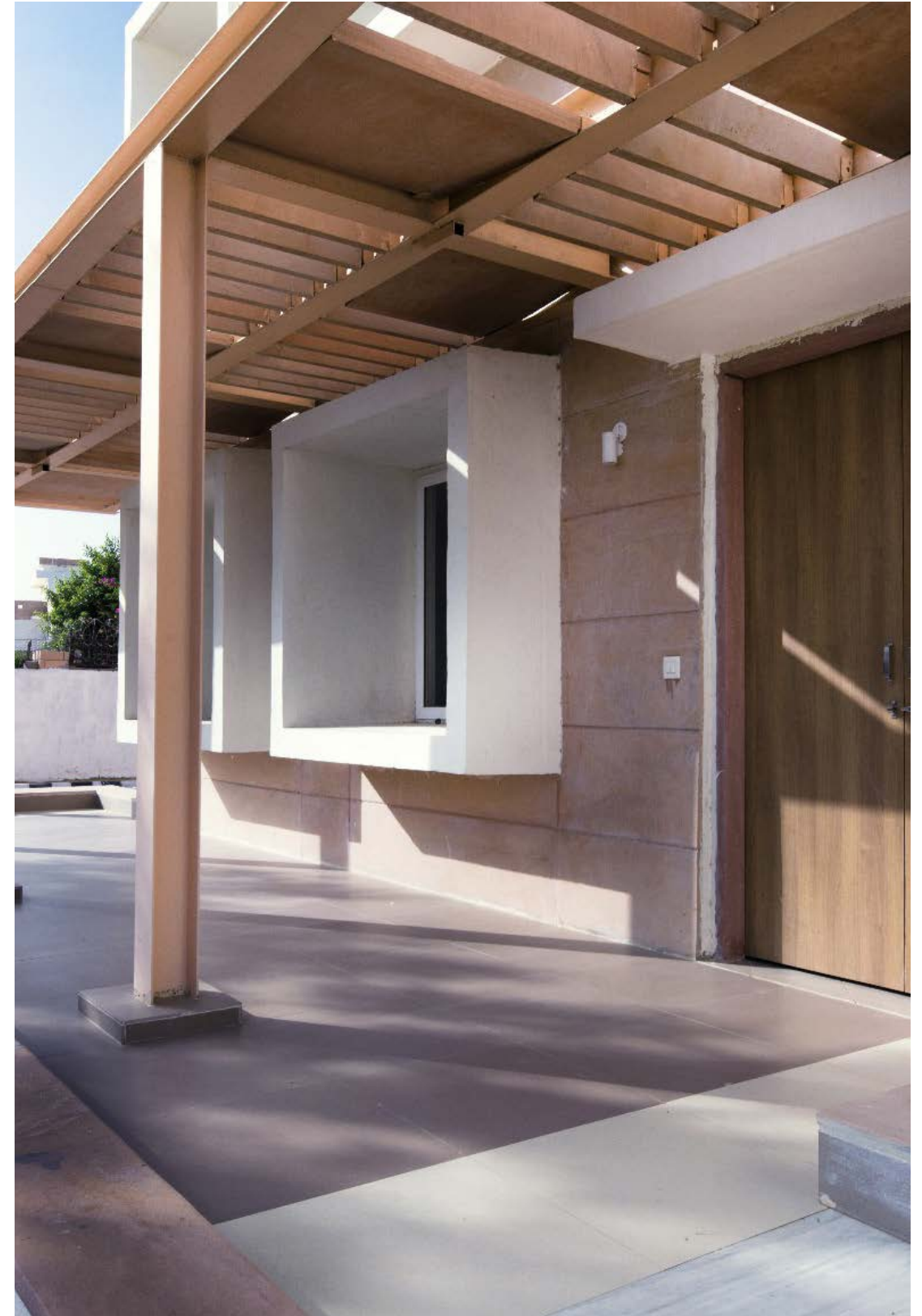


Barmer, Rajasthan  
JSW

Residential



**Barmer Hostel**  
2017





**Bihar Museum**  
2012

A competition entry for the state museum that provides an inclusive and vibrant public domain for the city. The design creates a play of inward and outward spaces that connects the environment with the urban lifestyle.

2,00,000 sqft

Patna,Bihar  
Government of Bihar

Educational  
Cultural  
Public Infrastructure



**Bihar Museum**  
2012





**Installation at India Art Fair**  
2014

The installation sought to bring to the forefront the need for vibrant, culturally active public spaces in the city where 'aam' and art can meet.

NA

NSIC Ground, New Delhi  
India Art Fair

Cultural  
Public Infrastructure



Installation at India Art Fair  
2014





**Norwegian Embassy  
Pavilion**  
2010

The temporary entrance pavilion was designed for the Norwegian embassy in Delhi to mark the occasion of the Norwegian Constitution Day, observed on May 17 each year.

2000 sqft

New Delhi  
Norwegian Embassy

Cultural  
Public Infrastructure



**Aanganwadi**  
2016

A modular structure sans sharp edges to cater to the needs of the young users incorporating various elements such as interactive flooring patterns to play games such as ludo and snakes and ladders along with Gond art on walls.

1750 sqft

New Delhi  
Ministry of Education, Govt. of Delhi

Educational



Aanganwadi  
2016





**Giri Sports Centre**  
Ongoing

Set in the heart of Haryana's sporting culture, we are retrofitting the Giri sports centre, a hidden gem of modern architecture.

38,750 sqft



Hisar, Haryana  
JSW

Residential  
Sports Infrastructure



**Giri Sports Centre**

Ongoing





**Residential School,  
Atchikadu**  
2013

The architectural expression of the school is inspired from nature; creating unique, seamless, organic and free flowing forms.

2,25,000 sqft

Atchikadu, Tamil Nadu  
Learn Today

Residential  
Educational



**Nalanda University**  
2012

The new campus sought to combine the pursuit of knowledge with the ideals of inclusivity and accessibility, reflective of contemporary society and its quest for equity and progress.

20,00,000 sqft

Rajgir, Bihar  
State Government of Bihar

Educational



Nalanda University  
2012





**Mitrao Lake,  
Najafgarh**  
Onoing

Redevelopment of the water body using sensitive sustainable technology.

71,400 sqft

Najafgarh,Delhi  
Delhi Government

Urbanism



**MUSI River Revitalization**  
2018

A riverfront development project to create a cultural identity and a vibrant economy with the ecological renewal of Musi river.

61,36,00,000 sqft

Hyderabad  
Government of Telangana

Urbanism  
Public Infrastructure



**MUSI River Revitalization**  
2018





**Campus France Office**  
2018

Rebranding and experiential design of 'Campus France' - the education advisory service of the French Embassy in India.

215 sqft

New Delhi  
Institut Francais India

Educational



Campus France Office  
2018





**ICREON Office**  
2019

The workspace for a digital innovation agency.

30,000 sqft

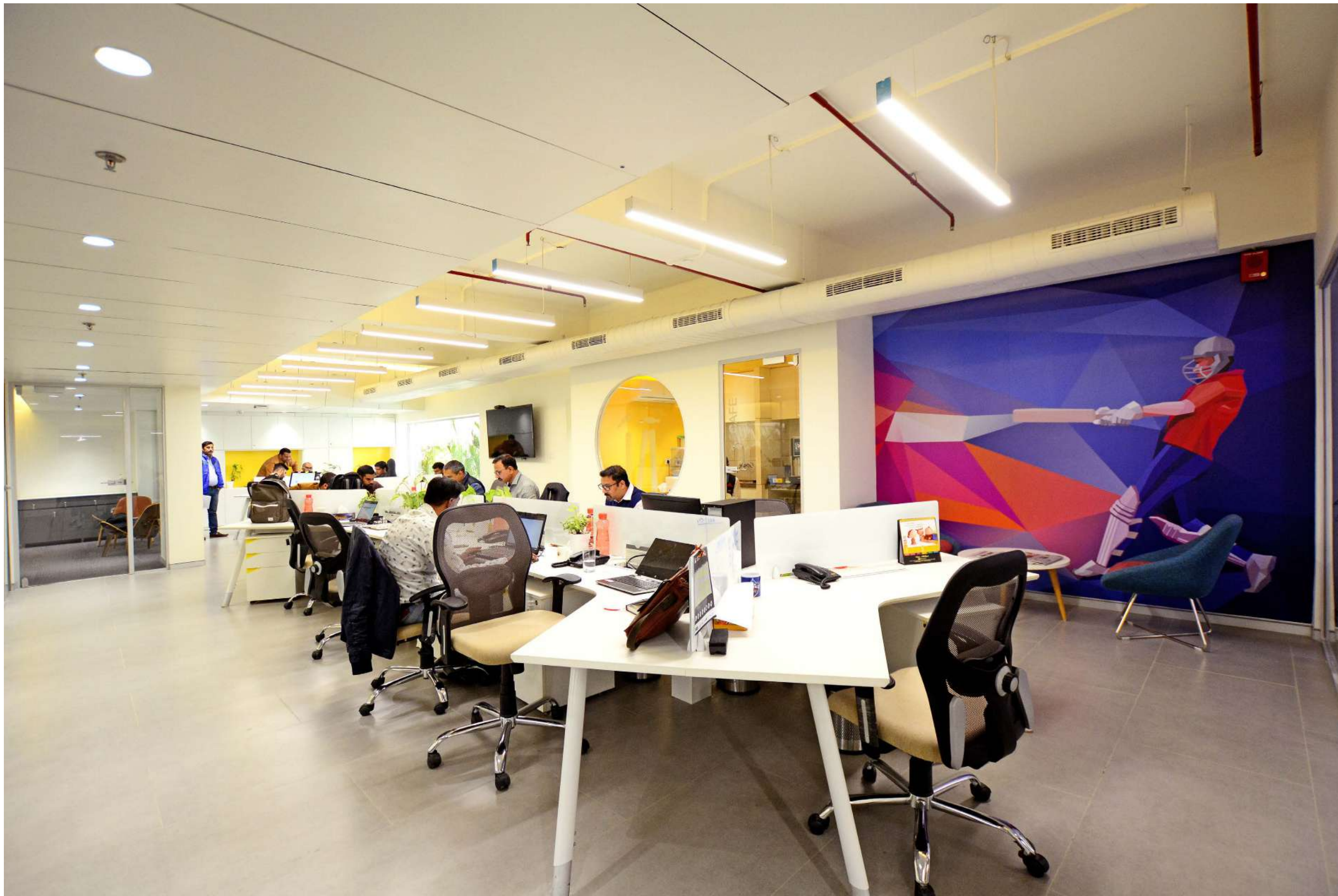
NOIDA  
ICREON

Commercial



ICREON Office  
2019





**Delhi Capitals Office**  
2019

The contemporary design focuses on 'branding' the new team management center for the Indian Premier League's Delhi office.

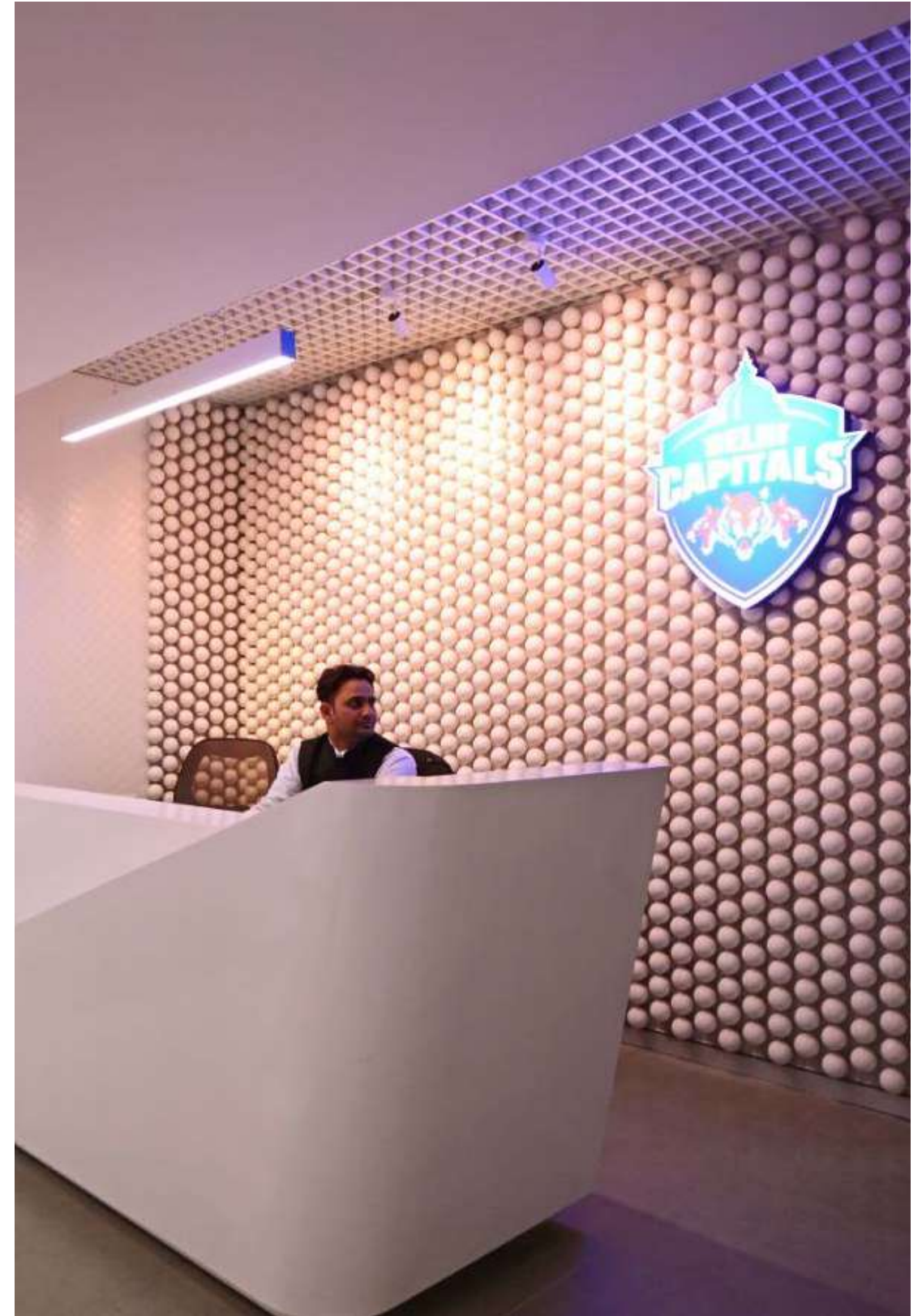
3,000 sqft

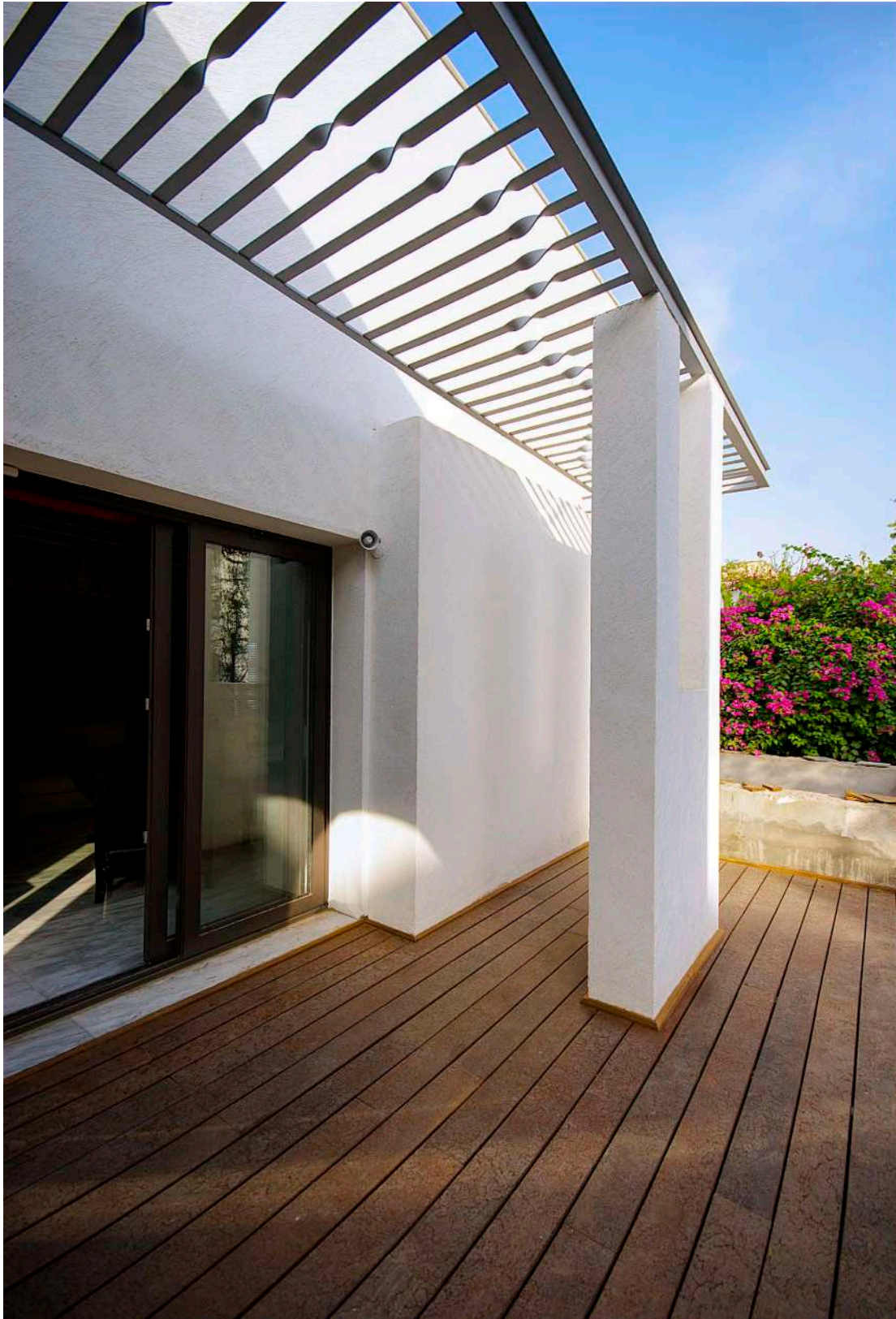
ITO, New Delhi  
JSW, GMR

Commercial



Delhi Capitals Office  
2019

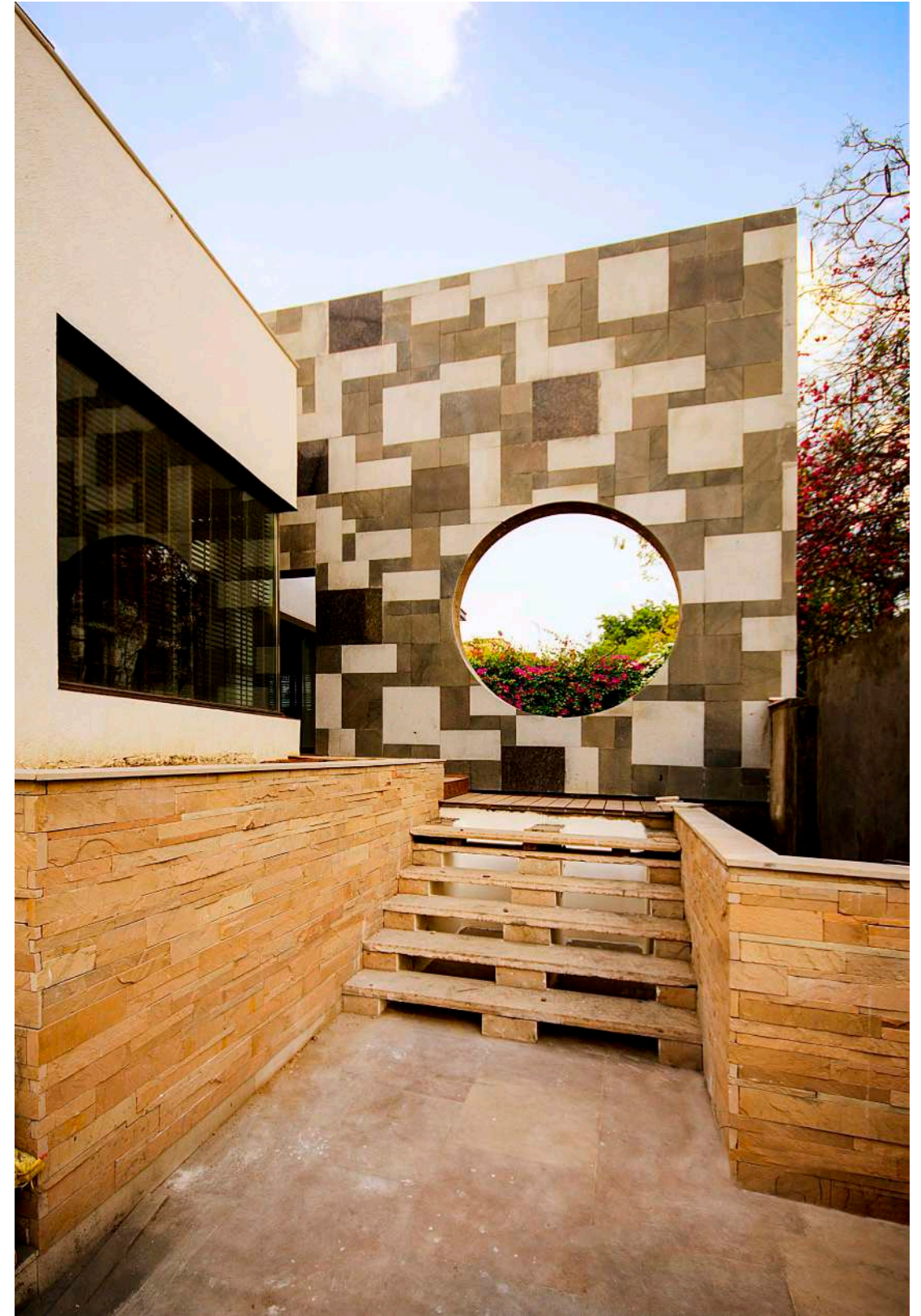




**Prasad Residence**  
2010

Our proposal for the Prasad residence, through minimal demolition, optimized the quality of the available open space, bringing in plenty of daylight and a flavour of the outdoors to the interior spaces.

4,500 sqft



New Delhi  
Prasads

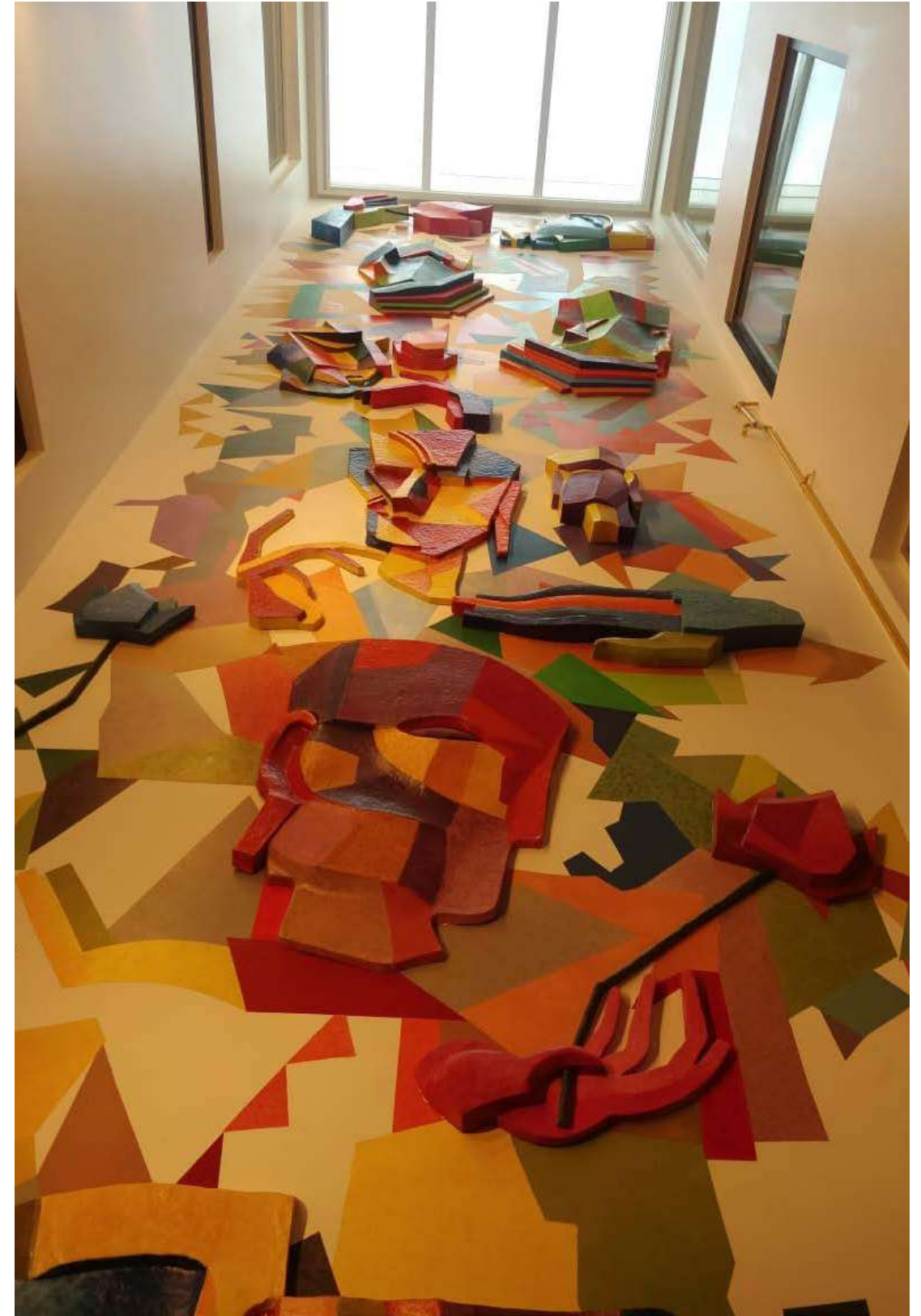
Residential



**Sareen Residence**  
2019

A duplex designed for the family features double hieghted spaces and louvres for sun protection on the facade.

10,000 sqft



New Delhi  
Mr. Santosh Sareen

Residential



**Bansal Residence**  
2007

Located in one unit of a premium group housing project, the floor plates allowed for a flexible interior configuration. The duplex apartment enjoys sweeping views of the adjacent golf course and the Aravali range in the distance.

8,000 sqft

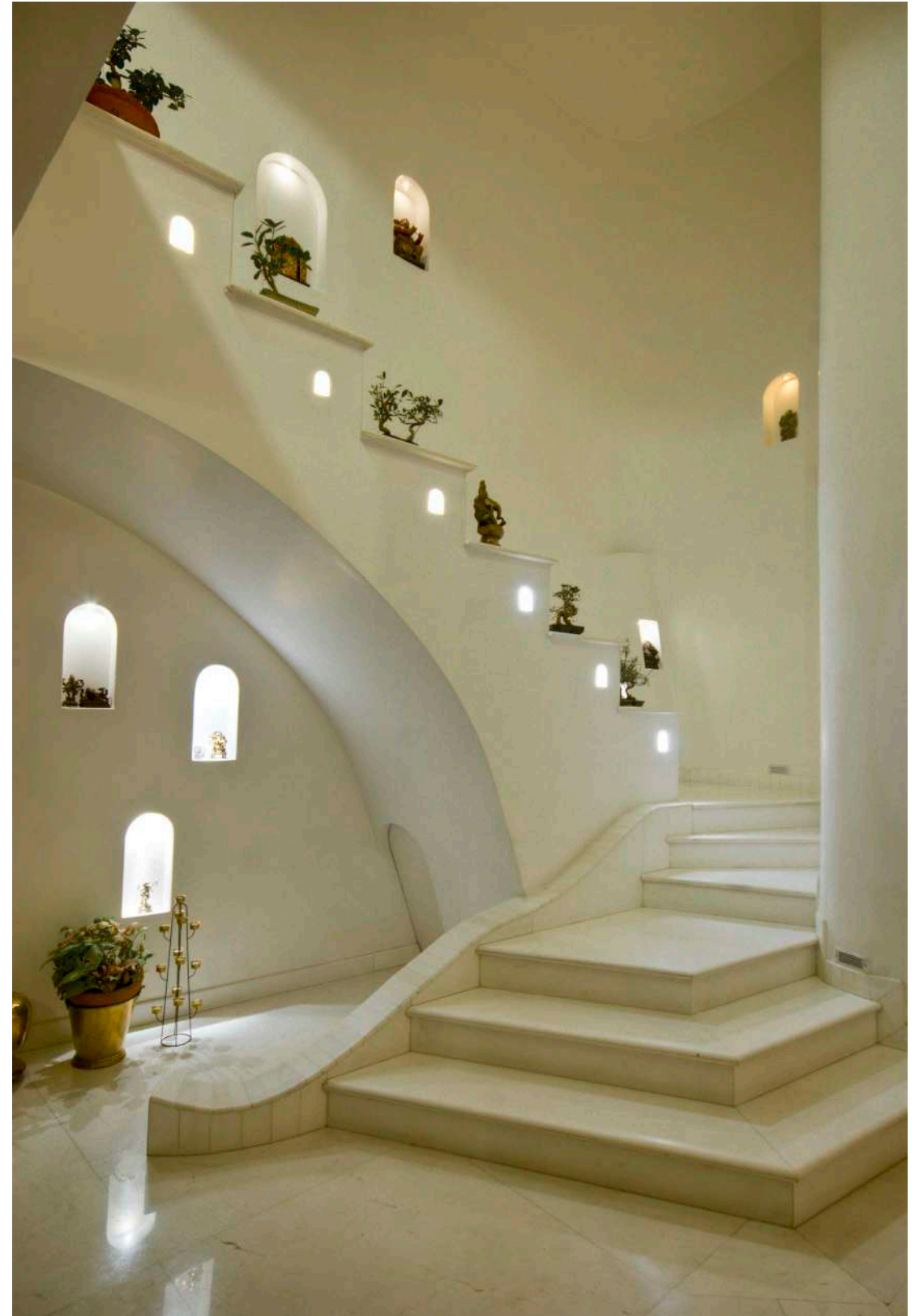


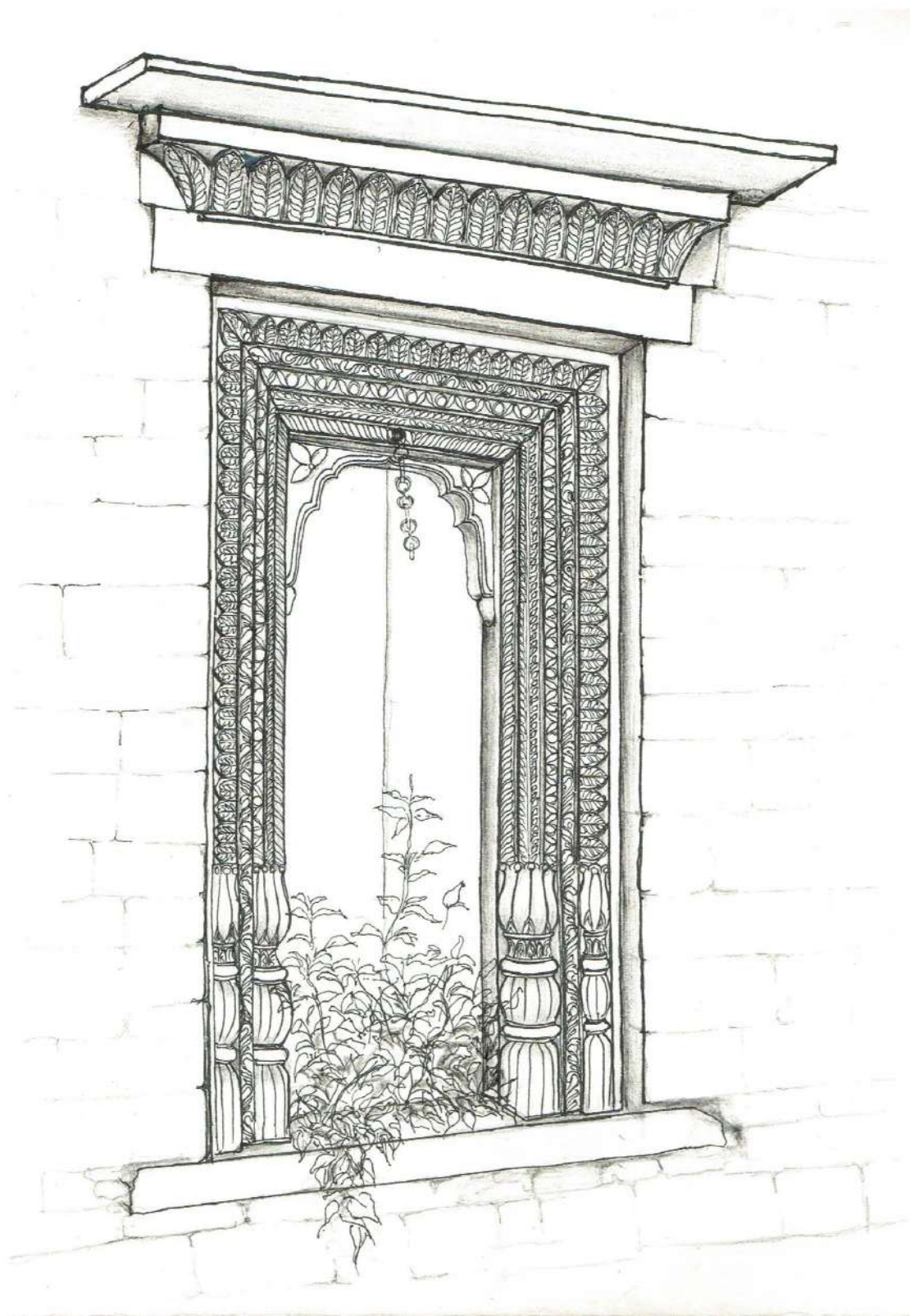
Gurgaon, Haryana  
Bansals

Residential



**Bansal Residence**  
2007





**Kumaon Build Initiative**

Kumaon Build is an open source work-in-progress repository of ideas, concepts and resources to design, build and construct in the Kumaon region of Uttarakhand. It seeks to enable and build upon the essential.



Kumaon, Uttarakhand

Research



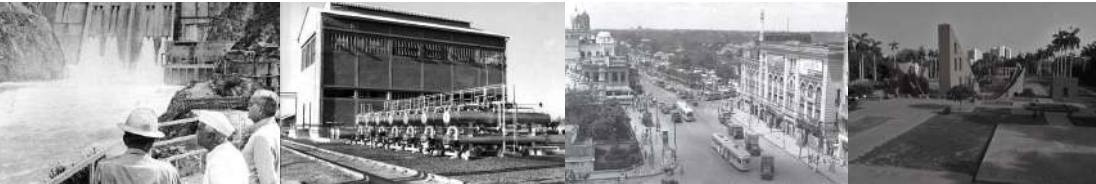
**Kumaon Build Initiative**  
Likhai Documentation





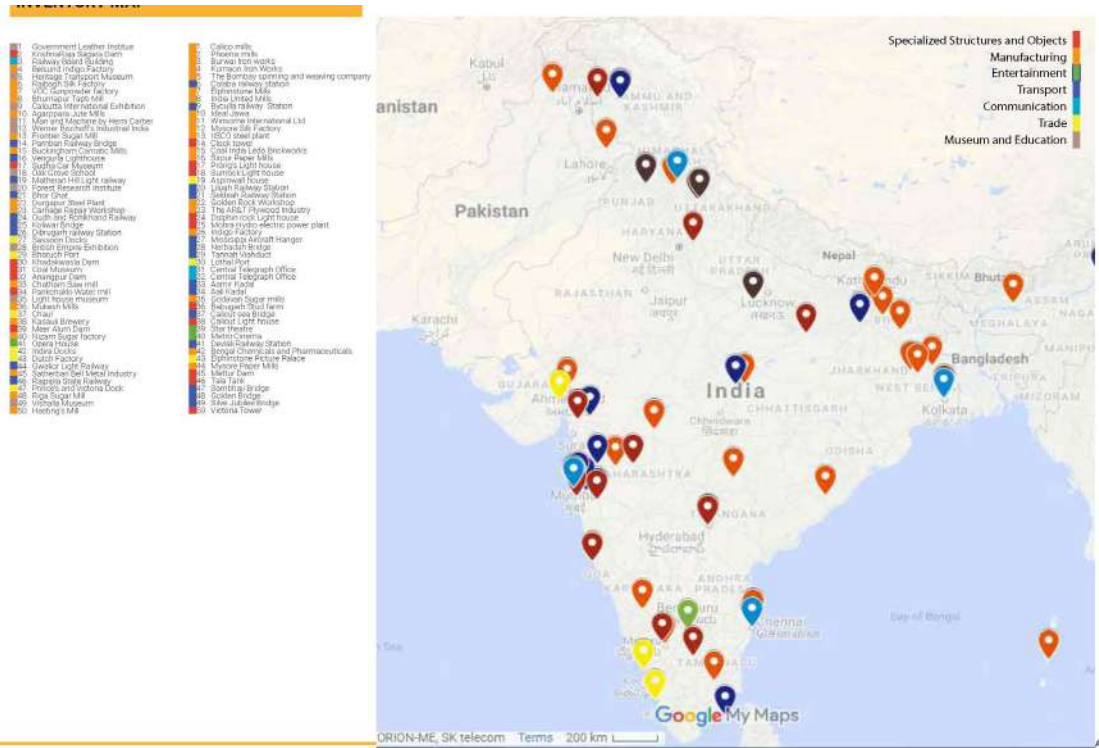
**Kumaon Build Initiative**  
Champavat Moolvan





**Inventory of Industrial Heritage in India**  
Ongoing

An ongoing inventory of 300 sites across India with sites of manufacturing industry, transport industry etc.



Research



**Japanese Tea House and Conferencing facility**  
2007

The design focused on finding common ground between Indian and Japanese cultural outlook; and reconciling functions, site conditions and availability of materials & craftsmanship, with the proportion, aesthetics and essence of tea houses.

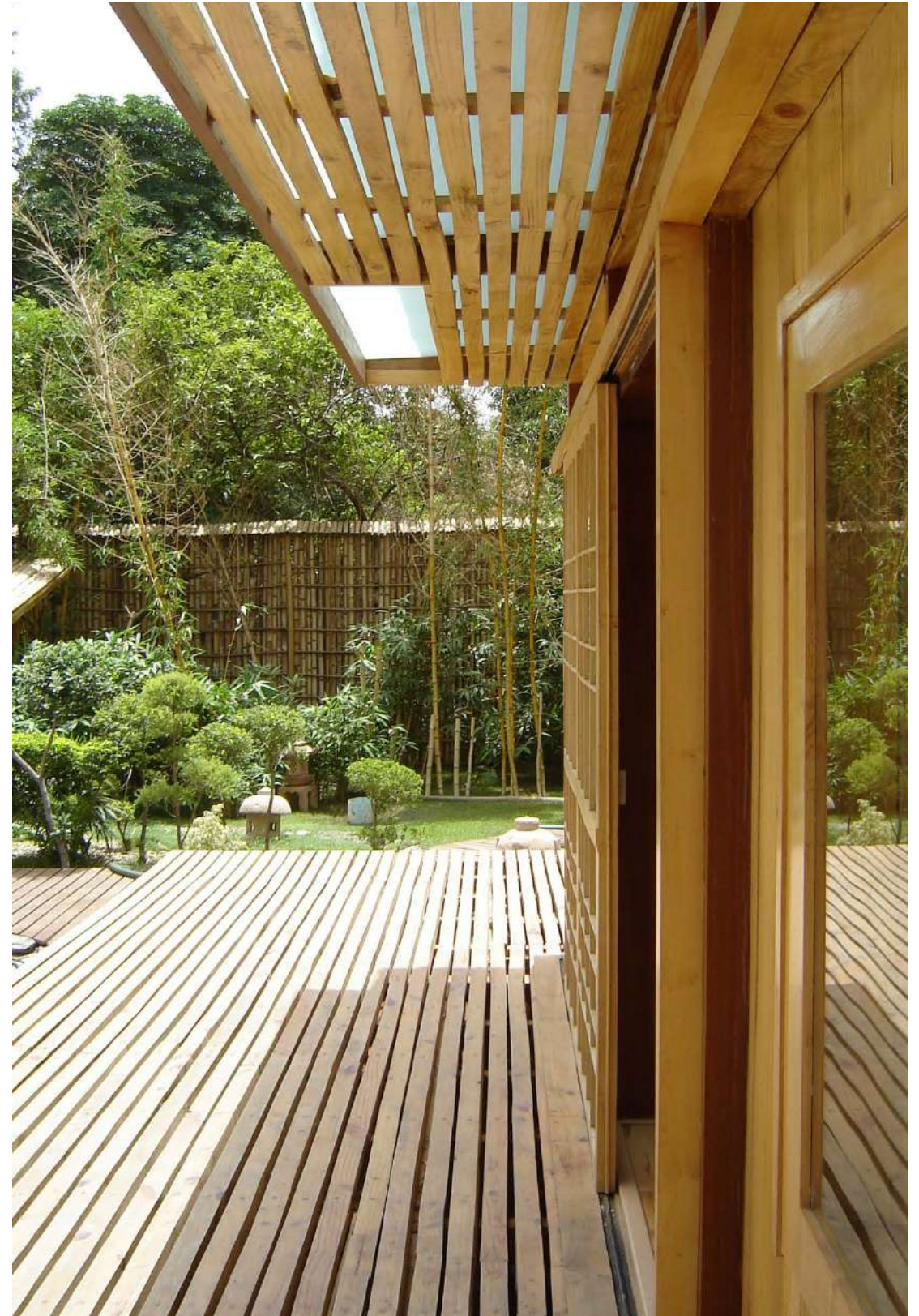
10,000 sqft

New Delhi  
India Center foundation, Delhi and Tokyo

Cultural



Japanese Tea House and  
Conferencing facility  
2007





Japanese Tea House and  
Conferencing facility  
2007

PROJECT INDEX

A

**AANGANWADI** .....120  
2016  
NEW DELHI  
MINISTRY OF EDUCATION, GOVT. OF DELHI  
EDUCATIONAL

**ARDEE SCHOOL** ..... 36  
2017  
NFC NEW DELHI  
ARDEE  
EDUCATIONAL/CULTURAL

**ASHOKA UNIVERSITY** .....18  
2016  
SONEPAT, HARYANA  
INTERNATIONAL FOUNDATION  
FOR RESEARCH AND EDUCATION  
EDUCATIONAL

B

**BANSAL RESIDENCE** .....156  
2007  
GURGOAN,HARYANA  
BANSALS  
RESIDENTIAL

**BARMER HOSTEL** .....106  
2017  
BARMER,RAJASTHAN  
JSW  
RESIDENTIAL

**BASPA BHAWAN**..... 98  
2017  
NEW DELHI  
NORWEGIAN EMBASSY  
HOSPITALITY

**BHOPAL GAS TRAGEDY MEMORIAL**..... 42  
ONGOING  
BHOPAL,MADHYA PRADESH  
GOVT. OF MADHYA PRADESH  
CULTURAL/EDUCATIONAL/PUBLIC INFRASTRUCTURE

**BHOPAL WAR MEMORIAL** ..... 48  
2008  
BHOPAL,MADHYA PRADESH  
GOVT. OF MADHYA PRADESH  
CULTURAL/URBANISM/PUBLIC INFRASTRUCTURE

**BIHAR MUSEUM** ..... 110  
2012  
PATNA,BIHAR  
GOVT. OF BIHAR  
CULTURAL/EDUCATIONAL/PUBLIC INFRASTRUCTURE

**BONJOUR INDIA EXPERIENCE** .....24  
2017  
NEW DELHI  
FRENCH CULTURAL INSTITUTE  
CULTURAL /PUBLIC INFRASTRUCTURE /URBANISM

C

**CAMPUS FRANCE OFFICE**.....140  
2011  
NEW DELHI  
INSTITUT FRANCAIS INDIA  
EDUCATIONAL

D

**DELHI CAPITALS OFFICE** .....148  
2019  
ITO DELHI  
JSW, GMR  
COMMERCIAL

G

**GBP AEROSI**..... 80  
ONGOING  
BANUR, PUNJAB  
GBP  
COMMERCIAL/RESIDENTIAL

**GBP CENTRUM 1** ..... 58  
ONGOING  
ZIRAKPUR,PUNJAB  
GBP  
HOSPITALITY/PUBLIC INFRASTRUCTURE

**GBP CITY CENTRE HOUSING AND COMMERCIAL CENTRE**..... 88  
ONGOING  
BANUR, PUNJAB  
GBP  
COMMERCIAL/RESIDENTIAL

**GIRI SPORTS CENTRE** .....124  
ONGOING  
HISAR,HARYANA  
JSW  
SPORTS INFRASTRUCTURE/RESIDENTIAL

I

**ICREON OFFICE** .....144  
2019  
NOIDA  
ICREON  
COMMERCIAL

**INHWA BUSINESS CENTRE** ..... 68  
2012  
GURGOAN,HARYANA  
INHWA  
COMMERCIAL

**INSTALLATION AT INDIA ART FAIR**..... 114  
2014  
NSIC GROUNDS,NEW DELHI  
INDIA ART FAIR  
CULTURAL/PUBLIC INFRASTRUCTURE

**INVENTORY OF INDUSTRIAL HERITAGE IN INDIA**.....164  
ONGOING  
RESEARCH

**INSTITUT FRANCAIS INDIA**..... 52  
2017  
NEW DELHI  
FRENCH CULTURAL INSTITUTE  
CULTURAL/PUBLIC INFRASTRUCTURE

J

**JAPANESE TEA HOUSE AND COMFERENCING FACILITY** .....166  
2007  
NEW DELHI  
INDIA CENTER FOUNDATION,DELHI AND TOKYO  
CULTURAL

K

**KILBA STAFF HOUSING**.....102  
ONGOING  
KILBA, HIMACHAL PRADESH  
JSW  
RESIDENTIAL

**KUMAON BUILD INITIATIVE** .....160  
KUMAON, UTTARAKHAND  
RESEARCH

L

**LOCAL BUS TERMINALS** ..... 72  
ONGOING  
NEW DELHI  
GOVT. OF NCT OF DELHI  
PUBLIC INFRASTRUCTURE

M

**MITRAO LAKE** .....134  
ONGOING  
NAJAFGARH, DELHI  
DELHI GOVERNMENT  
URBANISM

**MUSI RIVER REVITALIZATION** .....136  
2018  
HYDERABAD  
GOVT. OF TELANGANA  
PUBLIC INFRASTRUCTURE/URBANISM

N

**NORWEGIAN EMBASSY PAVILION** ..... 118  
2010  
NEW DELHI  
NORWEGIAN EMBASSY  
CULTURAL /PUBLIC INFRASTRUCTURE

**NALANDA UNIVERSITY** .....130  
2012  
RAJGIR,BIHAR  
STATE GOVT. OF BIHAR  
EDUCATIONAL

P

**PARAMEDICAL COLLEGE** ..... 76  
ONGOING  
HISAR,HARYANA  
JSW  
EDUCATIONAL

**PRASAD RESIDENCE**.....152  
2010  
NEW DELHI  
PRASADS  
RESIDENTIAL

R

**RESIDENTIAL SCHOOL,ATCHIKADU** .....128  
2013  
ATCHIKADU,TAMIL NADU  
LEARN TODAY  
EDUCATIONAL/RESIDENTIAL

**RED CEDAR COTTAGE** ..... 94  
2016  
PALAMPUR,HIMACHAL PRADESH  
SECLUDE  
HOSPITALITY

S

**SAREEN RESIDENCE** .....154  
2019  
NEW DELHI  
MR. SANTOSH SAREEN  
RESIDENTIAL

**SECLUDE RAMGARH** ..... 90  
2006  
RAMGARH,UTTARAKHAND  
SECLUDE  
HOSPITALITY

**SHIV NADAR CULTURAL CENTRE AND KIRAN NADAR MUSEUM OF ARTS** ..... 32  
2019  
NOIDA  
HCL TECHNOLOGIES  
CULTURAL

**SRI AUROBINDO SCHOOL OF ARTS AND COMMUNICATION**..... 58  
2017  
NEW DELHI  
SRI AUROBINDO SOCIETY  
CULTURAL/EDUCATIONAL

T

**TEMPLE IN STONE AND LIGHT** ..... 62  
2016  
BARMER,RAJASTHAN  
RAJWEST POWER LIMITED  
CULTURAL/EDUCATIONAL

# MATTERS

## **Images**

Hemant Chawla  
Akash Kumar Das  
Sajal Sharma  
Anant  
SuryanDang  
Sanjeet Wahi  
Gaurav Gupta  
Anunay Sood  
Nishita Mohta  
Achint Jain  
Amritha Ballal  
Suditya Sinha  
Moulshri Joshi

## **Printing**

Khurana Digital Printers, Nehru Place, New Delhi

## **Design**

Aayushi Katare, Codesign LLP